

digital

**PDP-12
LIBRARY**

CONVERT

A PROGRAM TO TRANSLATE LAP6 or LAP6-3L SOURCE TO DIAL

**Order DEC-12-ESYB-D from Program Library, Digital Equipment
Corporation, Maynard, Mass. 01754 Price \$1.00**

**Direct comments concerning this document to:
Software Information Service
Digital Equipment Corporation
Maynard, Massachusetts 01754**

0

0

0

ABSTRACT

Program CONVERT will perform the major tasks in translating a LAP6 or LAP6-3L source stored on a LINC tape to a suitable source for utilization by the DIAL system on the PDP-12.

REQUIREMENTS

1. The minimum configuration is the PDP-12A.
2. A DIAL system tape containing CONVERT on Unit 0.
3. A LAP6 tape on Unit 1 containing the source program to be translated.

OPERATING PROCEDURE

1. Load a DIAL system tape containing the CONVERT program onto Unit 0.
2. Load the LAP6 tape on Unit 1.
3. Call in DIAL.
4. Clear the DIAL work area with the CL monitor command.
5. Call PROGRAM CONVERT by typing:
→ LO CONVERT,0 ↵
6. Complete the questionnaire seen on the scope by inserting the starting Block Number of the program to be converted. Press the LINEFEED Key upon completion. (See QANDA documentation for more details.)
7. Upon completion of the program, CONVERT rewinds the LAP6 tape on Unit 1, types out a message warning the user to remove the LAP tape from Unit 1 and to type:
→ AP 370,0 ↵
8. The user now has two alternative procedures:
Choice 1 - if more than one program will be translated, leave the LAP tape on Unit 1, type:
→ SP name,0 ↵
and file your source program ("name" is an eight-character name selected by the user). Then issue a:
→ LO CONVERT,0 ↵
to translate another source program.
Choice 2 - Replace the LAP tape on Unit 1 with a DIAL system tape, check and edit program, then type:
→ LI ↵ to assemble and obtain a listing
→ AS ↵ to assemble only
→ PS ↵ to obtain a quick source listing without assembling.

WARNING

If you issue a LI or AS command without removing your LAP tape, your assembled binary will overlay filed programs on the LAP tape.

PROGRAM RESULTS

1. Converts LAP6 packed LINC code source into packed ASCII source code. (See Table 1.)
2. Removes the LAP tag indicator and reverses the tag to that acceptable by DIAL (i.e., "#2C" becomes "C2,TAB") and follows the user tag with a comma and a TAB.
3. Initiates each line with a TAB unless the line begins with a tag or comment.
4. Inserts a space after all three letter combinations except those in a comment or text environment.
5. Changes each "i" to an "I _", each "u" to an "U _", and each "p" to a period, ".".
6. Reverses all number-letter combinations to letter-number combinations indicating valid references to tags.
7. Inserts an *20 into the new source along with a warning message.
8. Inserts equalities for old mnemonics that can be legally used on the 12. These will be at the start of the new program.
9. Changes ALT MODE/A to TEXT ← > and ALT MODE/B to >. (See restriction for this text system when used with the new QANDA.)
10. The LAP terminator code 77 changes to code 00 (\$) indicating a source terminator for DIAL source programs.
11. Ignores the first two words of a LAP6 source (2065, 5712).
12. Replaces the square left bracket with a slash to indicate comments in the DIAL system.
13. Replaces the vertical bar with a backslash to indicate the $1000_8 x + y$ operator.

LIMITATIONS

The CONVERT program only accomplishes the major efforts involved in translation. The user must accept responsibility for solutions to overcome situations caused by a new monitor system (DIAL) and a new computer (PDP-12). These situations are outlined below:

1. KBD - DIAL will issue a US error and the user must insert the correct IOB's or a PDP-8 mode routine. (Also see Limitation 10.)
2. OPR n - DIAL will issue a US error. The user must determine how the LINC-8 PROGOFOP was modified to handle particular OPR situations.
3. TAPE READ/WRITE - The DIAL index format file locations, QANDA size and location, working area, etc. differ from LAP6 and LAP6-3L.

4. EXC - Use of the EXC mnemonic will cause a US error. The user may desire to insert his PDP-8 mode program directly into the program at this point.
5. SAM n - The A-D sampling instruction utilizes one additional bit in the PDP-i2.
6. PDP - DIAL will create an instruction (002) which changes the processor from LINC Mode to PDP-8 Mode. The LINC-8 PDP mnemonic (0513) also transferred to PDP-8 mode, but to the location in the LINC accumulator.
7. REARRANGED INSTRUCTION ELEMENTS - LAP6 allowed rearranged field elements (seldom used) which will confuse the translator and will not be accepted by DIAL. DIAL expects (if present) a tag, mnemonic, operand and comment:
Example: "i6LDA" becomes "TABI L6DA".
8. QANDA - Check all "JMP 1000", "RDC 2403", and "RDE 2403" instructions as these may indicate use of the LINC-8 Q+A Subroutine. The new QANDA Subroutine is contained in two tape blocks and its location may not be Block 403.
9. TEXT META - Check all data between brackets after translation. These indicate a text mode probably used with the LINC-8 Q+A buffer. The new QANDA has a separate text and answer string (see the QANDA documentation for more details).
10. TELETYPE INPUT - The old Q+A and KBD inputs were in LINC code. The new QANDA and most input routines utilize ASCII code. Thus, the routines following an input routine will require changing. (Example - a 1 is 01 in LINC code, 261 in ASCII, and 61 in packed ASCII.) The new QANDA left justifies packed ASCII in an answer buffer, while the Q+A right-justified packed LINC code in the text buffer.
11. ZTA - The retrieval of the Block Number from the Z register after a LAP LO command does not apply to the MQ register in the DIAL system.

Table 1
Character Changes

| LAP | | DIAL | |
|-------------|------------------|------------------|-------------|
| <u>Code</u> | <u>Character</u> | <u>Character</u> | <u>Code</u> |
| 00 | 0 | 0 | 60 |
| 01 | 1 | 1 | 61 |
| 02 | 2 | 2 | 62 |
| 03 | 3 | 3 | 63 |
| 04 | 4 | 4 | 64 |
| 05 | 5 | 5 | 65 |
| 06 | 6 | 6 | 66 |
| 07 | 7 | 7 | 67 |
| 10 | 8 | 8 | 70 |
| 11 | 9 | 9 | 71 |
| 12 |) |) | 43 |
| 13 | Rubout | Rubout | None |
| 14 | Space | Space | 40 |
| 15 | i | I | 11 |

Table 1 (Cont)
Character Changes

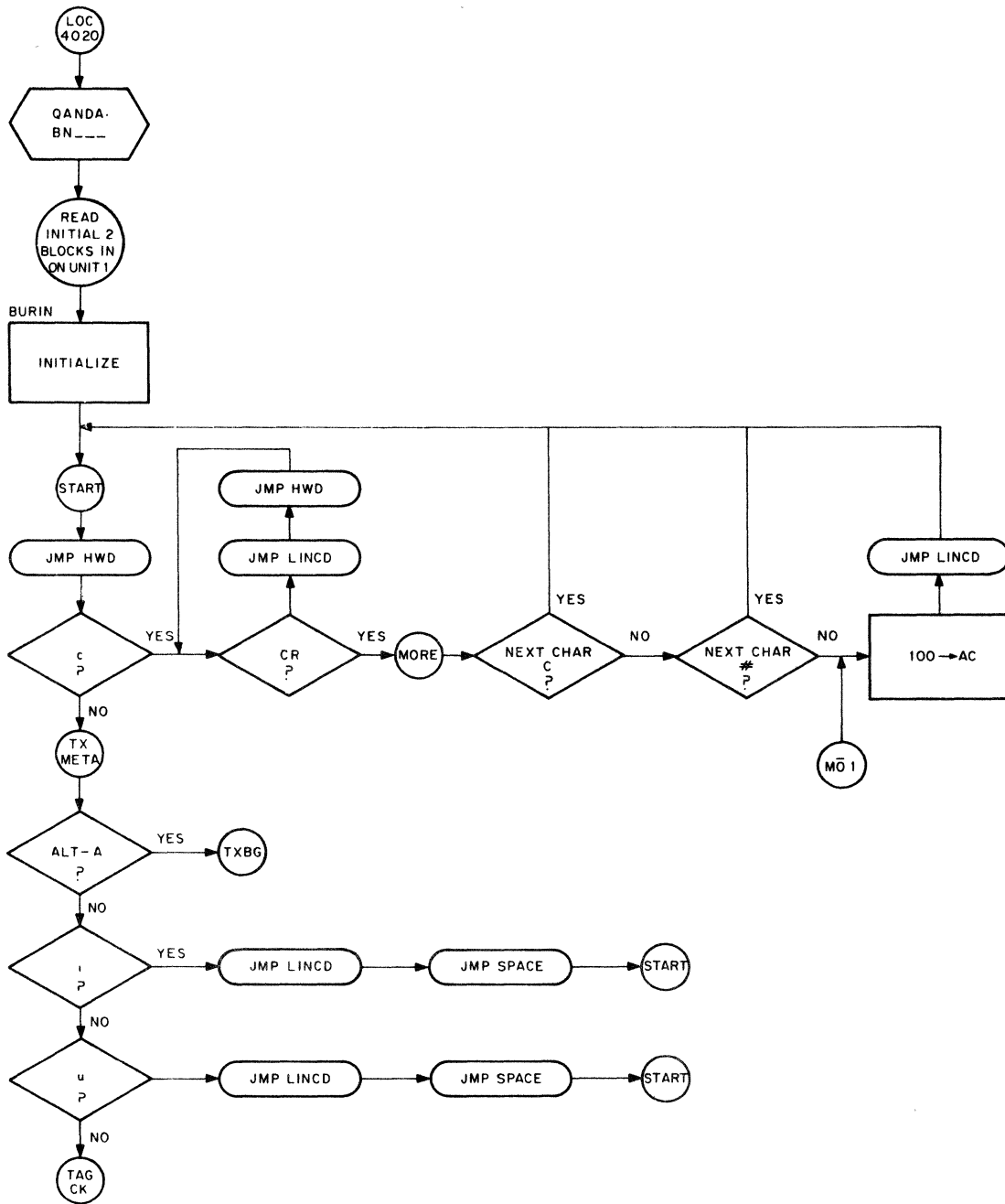
| <u>Code</u> | <u>LAP</u> <u>Character</u> | <u>DIAL</u> <u>Character</u> | <u>Code</u> |
|-------------|--------------------------------|---------------------------------|-------------|
| 16 | P | . | 56 |
| 17 | - | - | 55 |
| 20 | + | + | 53 |
| 21 | Vert Bar | \ | 34 |
| 22 | # | Z | 32 |
| 23 | ALT | ALT | none |
| 24 | A | A | 01 |
| 25 | B | B | 02 |
| 26 | C | C | 03 |
| 27 | D | D | 04 |
| 30 | E | E | 05 |
| 31 | F | F | 06 |
| 32 | G | G | 07 |
| 33 | H | H | 10 |
| 34 | I | I | 11 |
| 35 | J | J | 12 |
| 36 | K | K | 13 |
| 37 | L | L | 14 |
| 40 | M | M | 15 |
| 41 | N | N | 16 |
| 42 | O | O | 17 |
| 43 | P | P | 20 |
| 44 | Q | Q | 21 |
| 45 | R | R | 22 |
| 46 | S | S | 23 |
| 47 | T | T | 24 |
| 50 | U | U | 25 |
| 51 | V | V | 26 |
| 52 | W | W | 27 |
| 53 | X | X | 30 |
| 54 | Y | Y | 31 |
| 55 | Z | Z | 32 |
| 56 | LINEFEED | LINEFEED | 37 |
| 57 | illegal | ? | 77 |
| 60 | ? | ? | 77 |
| 61 | = | = | 75 |
| 62 | u | U | 25 |
| 63 | , | , | 54 |
| 64 | . | . | 56 |
| 65 | ⊠ | * | 52 |
| 66 | [| / | 57 |
| 67 | - | ? | 77 |
| 70 | " | See Item 9 of Program Results | |
| 71 | " | > | 76 |

Table 1 (Cont)
Character Changes

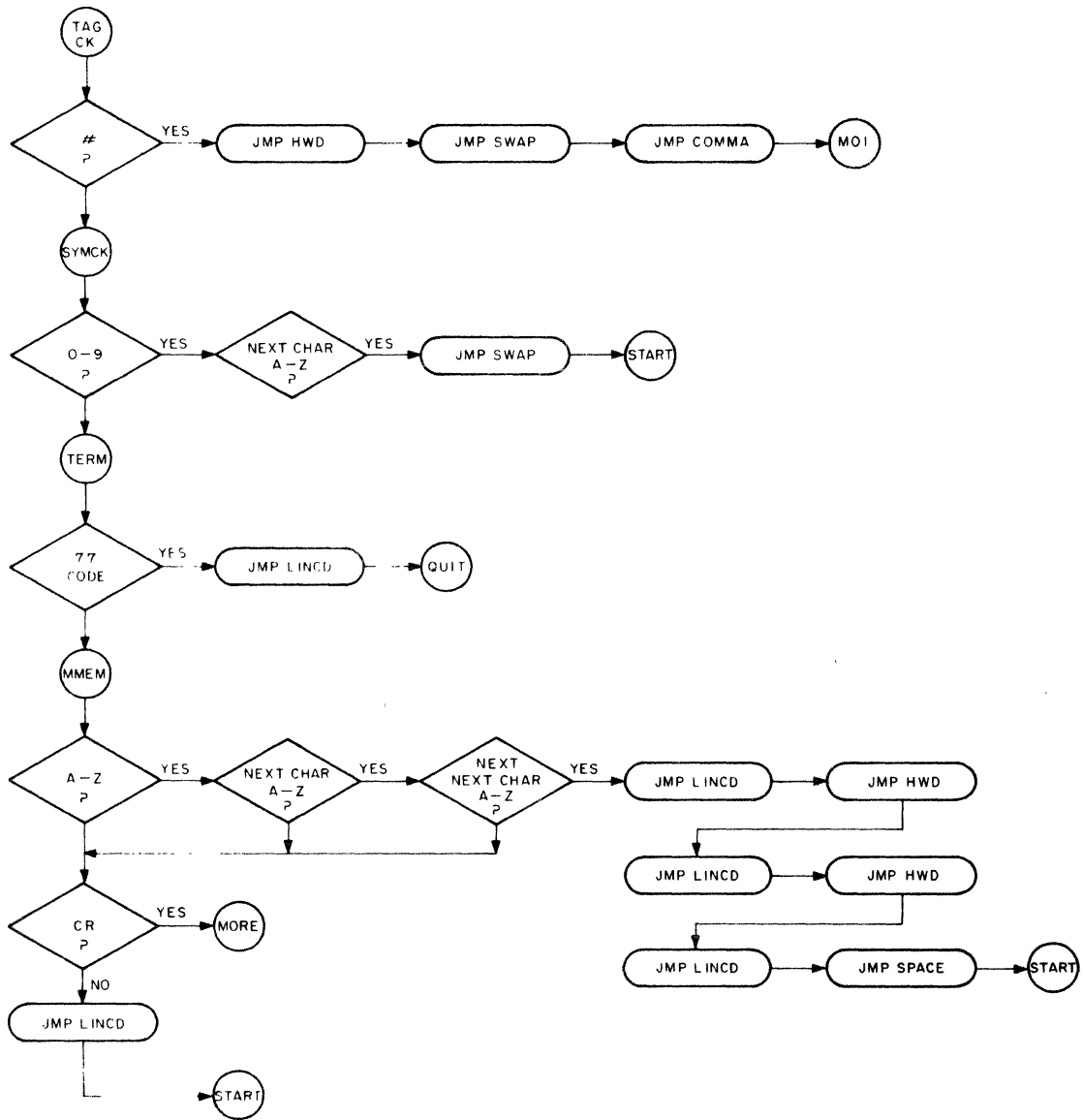
| LAP | | DIAL | |
|-------------|------------------|------------------|-------------|
| <u>Code</u> | <u>Character</u> | <u>Character</u> | <u>Code</u> |
| 72 | < | < | 74 |
| 73 | > | > | 76 |
| 74 |] |] | 35 |
| 75 | * | * | 52 |
| 76 | : | : | 72 |
| 77 | illegal (eof) | eof | 00 |
| 100 | illegal | TAB | 47 |
| | | ↑ | 36 |
| | | \$ | 44 |
| | | % | 45 |

INTERNAL MACRO-FLOW CHART

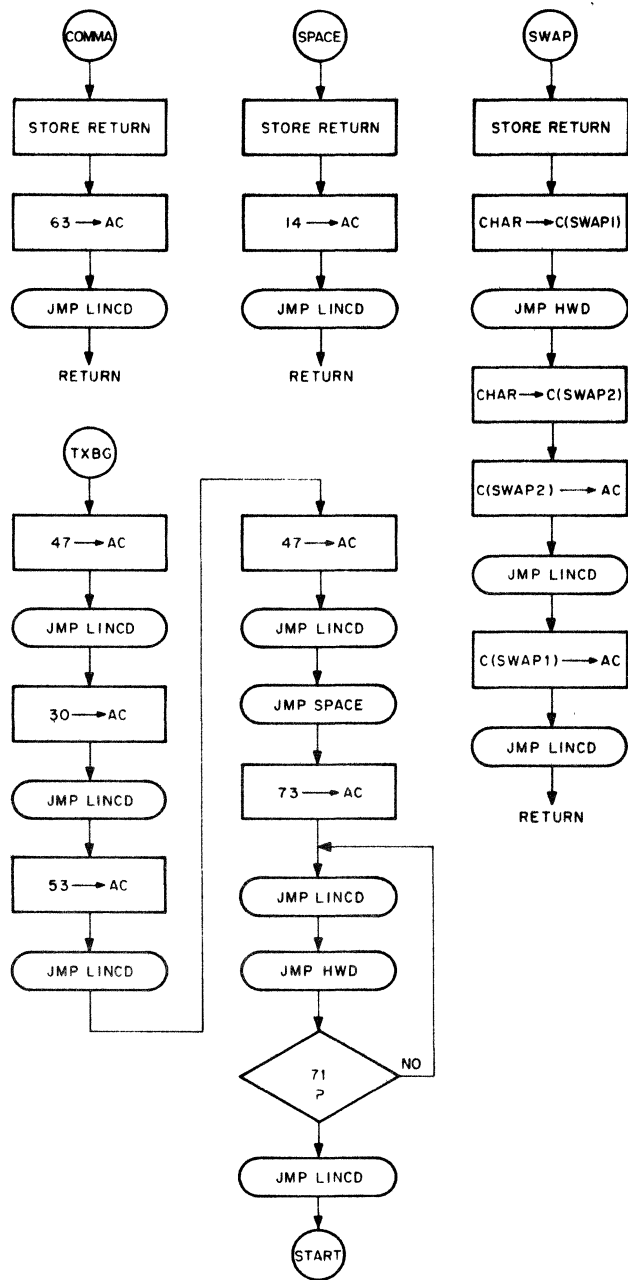
- AC = Reference to Accumulator
- IX10 = Reference to the Auto-Index Register used as the input half-word pointer.
- IX11 = Reference to the Auto-Index Register used as the output buffer half-word pointer.
- CR = Carriage Return
- HWD = Routine that reads in the next character (half-word) from the input buffer and, if necessary, refills the input buffer. Each buffer refill reads in two blocks to eliminate character look-ahead problems.
- LINCD = Routine that stores a converted character into the output buffer. When filled the output buffer is written into the next block of the DIAL working area.
- WA = Working Area on Unit 0.
- SWAP - Routine that reverses half-word characters to create a legal DIAL tag.



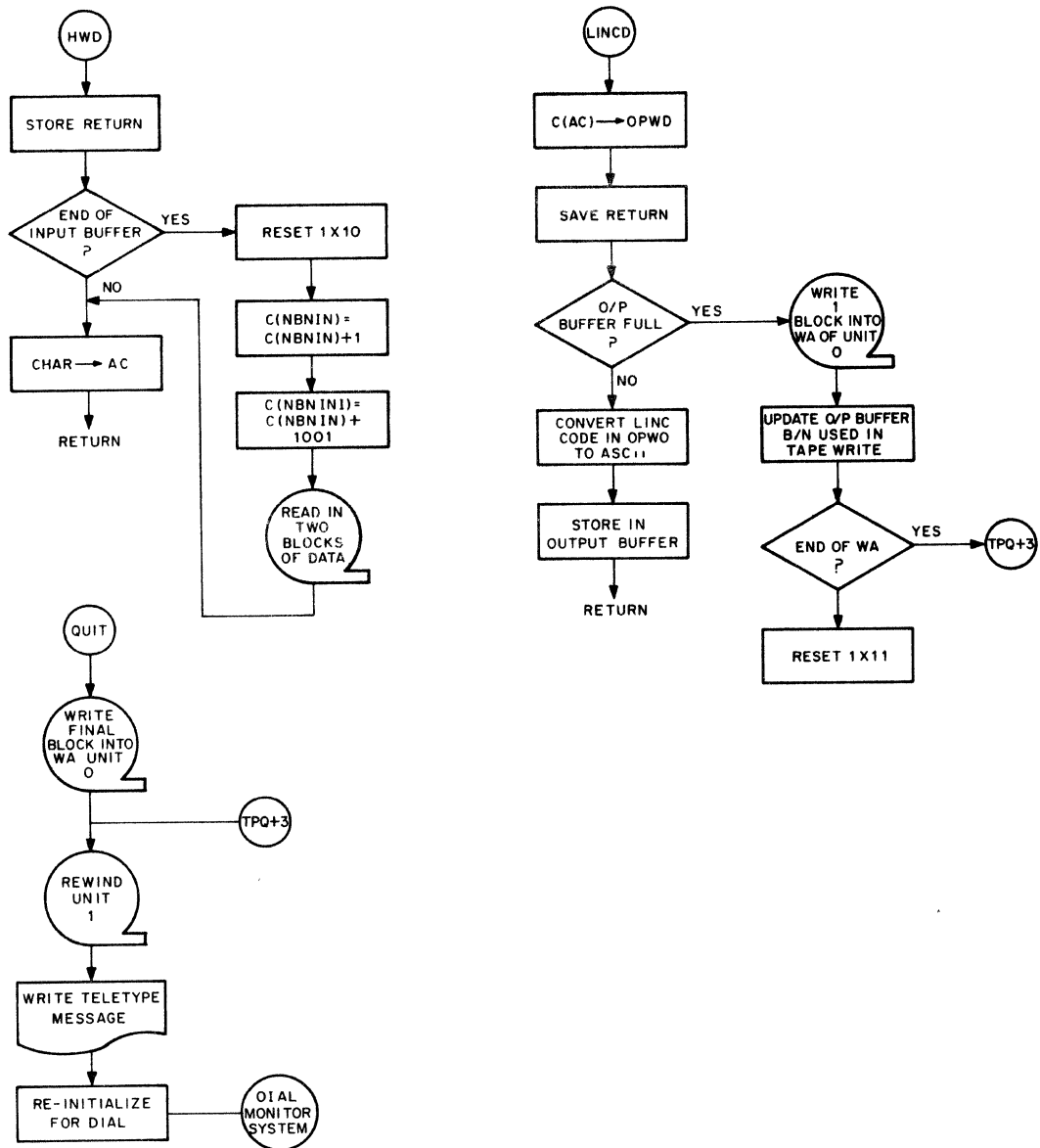
Flow Chart (Part 1 Of 4)



Flow Chart (Part 2 of 4)



Flow Chart (Part 3 of 4)



Flow Chart (Part 4 of 4)



```

*20
/PROGRAM          CONVERT
/PDP-12 PROGRAM
/INPUT:  PACKED LINC SOURCE
/FILED IN LAP6,LAP6A-3L,OR
/LAP6-3L SYSTEM ON UNIT 1
/OUTPUT:         PACKED ASCII SOURCE
/IN WA OF DIAL ON UNIT 0
/
0011      0220  6071      JMP QAINIT
0012      0221  0025      TEX1
0013      0022  0066      ANS1
0014      0023  6144      JMP QARFSH
0015      0024  7060      JMP SETUP
0016      0025  0603
0016      0026  1716
0016      0027  2605
0016
TEX1, TEXT >FCONVERT
0017      0030  2224
0017      0031  4310
0017
H
0020      0032  4043
0020      0033  1014
0020      0034  0120
0020      0035  6640
0020      0036  2317
0020      0037  2522
0020      0040  0305
0020      0041  4020
0020      0042  2217
0020      0043  0722
0020
HLAP6 SOURCE PROGRAM
0021      0044  0115
0021      0045  4310
0021      0046  2324
0021      0047  0122
0021      0050  2423
0021      0051  4011
0021      0052  1640
0021      0053  0214
0021      0054  1703
0021      0055  1374
0021
HSTARTS IN BLOCK<3
0022      0056  6343
0022      0057  1017
0022      0060  1640
0022      0061  2516
0022      0062  1124
0022      0063  4017
0022      0064  1605
0022      0065  3400
0022
HON UNIT ONE\>
0023      0066  7400      ANS1,   7400
0024      0067  0000              0000
0025      0070  3400              3400
0026
/PUT QANA HERE
0027
/Q+A ROUTINE FOR PDP-12
/SAVE JMP RETURN
0030      0071  1020      GAINIT, LDA I
0031      0072  0002              2
0032      0073  2000              ADD 0
0033      0074  1060              STA I
0034      0075  0000      QAB,   0
/JMP      +3

```

| | | | | |
|------|------|------|---------------|---|
| 0035 | 0076 | 2271 | ADD QAL+3 | |
| 0036 | 0077 | 4001 | STC 1 | /PTR TO FIRST PARAM |
| 0037 | 0100 | 1001 | LDA 1 | /GET FIRST PARAM |
| 0040 | 0101 | 2355 | ADD QAG+1 | /PTR TO HALFWORD-1 |
| 0041 | 0102 | 4150 | STC QAG-3 | |
| 0042 | 0103 | 1021 | LDA I 1 | |
| 0043 | 0104 | 4143 | STC QARFSH-1 | |
| 0044 | 0105 | 4006 | STC 6 | |
| 0045 | 0106 | 0043 | QACA, SET 3 | |
| 0046 | 0107 | 0143 | QARFSH-1 | |
| 0047 | 0110 | 0044 | SET 4 | /XR4 TO PTR TO QUESTIONS |
| 0050 | 0111 | 0150 | QAG-3 | |
| 0051 | | | | /TO HERE IF FIRST TIME THROUGH OR FOLLOWING A CR |
| 0052 | 0112 | 0041 | SET 1 | |
| 0053 | 0113 | 0004 | 4 | |
| 0054 | 0114 | 6361 | JMP QAT | |
| 0055 | 0115 | 0016 | NOP | /F |
| 0056 | 0116 | 1324 | LDH I 4 | /H, BUMP PTR IF H OR F |
| 0057 | 0117 | 6322 | QAD, JMP QAO | |
| 0060 | 0120 | 6126 | JMP ,+6 | /74 |
| 0061 | 0121 | 6141 | JMP QAE | /34 |
| 0062 | 0122 | 1460 | SAE I | /CR? |
| 0063 | 0123 | 0043 | 43 | |
| 0064 | 0124 | 6117 | JMP QAD | /NO |
| 0065 | 0125 | 6112 | JMP QACA+4 | |
| 0066 | | | | /INITIALIZE ANSWER BUFR |
| 0067 | 0126 | 1343 | STH 3 | /74 TO ANSWERS |
| 0070 | 0127 | 1324 | LDH I 4 | /NEXT HALFWORD |
| 0071 | 0130 | 1120 | ADA I | |
| 0072 | 0131 | 7717 | -60 | |
| 0073 | 0132 | 0017 | COM | |
| 0074 | 0133 | 4006 | STC 6 | |
| 0075 | 0134 | 1363 | STH I 3 | /0 IN AC |
| 0076 | 0135 | 0226 | XSK I 6 | |
| 0077 | 0136 | 6134 | JMP ,-2 | |
| 0100 | 0137 | 1323 | LDH I 3 | /BUMP PTR TO ANSWERS |
| 0101 | 0140 | 6117 | JMP QAD | |
| 0102 | | | | /ANSWER BUFR IS INITIATED |
| 0103 | 0141 | 1343 | QAE, STH 3 | |
| 0104 | 0142 | 0064 | SET I 4 | /XR4 TO PTR TO LAST TYPED CHAR IN ANSWER BUFR |
| 0105 | 0143 | 0000 | 0 | |
| 0106 | | | | /----RE-ENTER HERE TO REFRESH---- |
| 0107 | 0144 | 1020 | QARFSH, LDA I | /INITIAL Y POSITION |
| 0110 | 0145 | 0137 | 137 | |
| 0111 | 0146 | 4204 | STC QAH-1 | |
| 0112 | 0147 | 0063 | SET I 3 | /XR3 TO PTR TO HALFWORD QUESTIONS-1 |
| 0113 | 0150 | 0000 | 0 | |
| 0114 | 0151 | 0045 | SET 5 | /XR5 TO PTR TO LAST DISPLAYED CHAR IN ANSWER BUFR |
| 0115 | 0152 | 0143 | QARFSH-1 | |
| 0116 | 0153 | 0041 | QAG, SET 1 | |
| 0117 | 0154 | 0003 | 3 | |
| 0120 | 0155 | 6361 | JMP QAT | |
| 0121 | 0156 | 6165 | JMP ,+7 | /F |
| 0122 | 0157 | 1323 | LDH I 3 | /H, BUMP PTR |
| 0123 | 0160 | 1020 | LDA I | /NEITHER, ASSUME HALF SIZE |
| 0124 | 0161 | 1560 | BCL I | |
| 0125 | 0162 | 4174 | STC QAM+2 | /SET INSTR TO CLEAR FF FOR HALF SIZE |
| 0126 | 0163 | 2603 | ADD QAW | /NOP IN AC |
| 0127 | 0164 | 6172 | JMP QAM | |
| 0130 | 0165 | 1323 | LDH I 3 | /BUMP PTR |
| 0131 | 0166 | 1020 | LDA I | |
| 0132 | 0167 | 1620 | BSE I | |
| 0133 | 0170 | 4174 | STC QAM+2 | /SET INSTR TO SET FF FOR FULL SIZE |

| | | | | | |
|------|------|------|------|------------|--|
| 0134 | 0171 | 2630 | | ADD QAW+1 | /ADD 9U IN AC |
| 0135 | 0172 | 4336 | QAM, | STC QAP+3 | |
| 0136 | 0173 | 0024 | | MSC I 4 | /EAD CONTROL REGISTER |
| 0137 | 0174 | 1620 | | BSE I | /THIS INSTR CHANGES, EITHER BSE & OR BCL & |
| 0140 | 0175 | 0200 | | 200 | |
| 0141 | 0176 | 0004 | | MSC 4 | /AC TO CONTROL REGISTER |
| 0142 | 0177 | 0061 | | SET I 1 | /XR1 TO INITIAL X POSITION |
| 0143 | 0200 | 0100 | | 100 | |
| 0144 | 0201 | 1020 | | LDA I | /Y COORDINATE MULTIPLE |
| 0145 | 0202 | 7737 | | -40 | |
| 0146 | 0203 | 1160 | | ADM I | /Y COORDINATE |
| 0147 | 0204 | 0000 | | 0 | |
| 0150 | 0205 | 1323 | QAH, | LDH I 3 | |
| 0151 | 0206 | 6323 | | JMP QAO+1 | |
| 0152 | 0207 | 6372 | | JMP QAZ | /74 BUMP PTR TO NEXT CHAR, PUT 40 IN AC |
| 0153 | 0210 | 6227 | | JMP QAJ | /34 |
| 0154 | 0211 | 1420 | | SHD I | /NEITHER |
| 0155 | 0212 | 4300 | | 4300 | |
| 0156 | 0213 | 6153 | | JMP QAG | /CR, MOVE X AND Y COORDINATE |
| 0157 | 0214 | 6333 | | JMP QAP | /ISPLAY CHAR |
| 0160 | 0215 | 6205 | | JMP QAH | /PICK UP NEXT CHAR |
| 0161 | 0216 | 6333 | | JMP QAP | /TO HERE IF DISPLAYING ANSWER BUFR |
| 0162 | 0217 | 1520 | | SRO I | /SWITCH TO DISPLAY CURSOR, EITHER 0000 OR 7777 |
| 0163 | 0220 | 0000 | | 0 | /IFXR4=XR5, THEN SWITCH=7777 |
| 0164 | 0221 | 6607 | | JMP QAF | |
| 0165 | | | | | /QUESTION MODE |
| 0166 | 0222 | 1325 | QAI, | LDH I 5 | |
| 0167 | 0223 | 6323 | | JMP QAO+1 | |
| 0170 | 0224 | 6205 | | JMP QAH | /74 |
| 0171 | 0225 | 6205 | | JMP QAH | /34 |
| 0172 | 0226 | 6216 | | JMP QAI-4 | /NEITHER, DISPLAY IT |
| 0173 | 0227 | 6612 | QAJ, | JMP GETKBD | /TO HERE IF DISPLAYED BUFFER |
| 0174 | 0230 | 0470 | | AZE I | |
| 0175 | 0231 | 6075 | | JMP QAB | /NOTHING TYPED, EXIT |
| 0176 | 0232 | 0062 | | SET I 2 | |
| 0177 | 0233 | 0503 | | QAY | |
| 0200 | 0234 | 1402 | | SHD 2 | /LF? |
| 0201 | 0235 | 6402 | | JMP QAK+4 | /YES, EXIT |
| 0202 | 0236 | 1422 | | SHD I 2 | /CR? |
| 0203 | 0237 | 6314 | | JMP QAN | |
| 0204 | 0240 | 0206 | | XSK 6 | /IS THERE AN ANSWER FIELD? |
| 0205 | 0241 | 6144 | | JMP QARFSH | |
| 0206 | 0242 | 1422 | | SHD I 2 | /<? |
| 0207 | 0243 | 6266 | | JMP QAL | |
| 0210 | 0244 | 1422 | | SHD I 2 | />? |
| 0211 | 0245 | 6376 | | JMP QAK | |
| 0212 | 0246 | 1422 | | SHD I 2 | /ALT? |
| 0213 | 0247 | 6106 | | JMP QACA | |
| 0214 | 0250 | 1422 | | SHD I 2 | /BACK SLASH? |
| 0215 | 0251 | 6144 | | JMP QARFSH | /IGNORE |
| 0216 | 0252 | 1422 | | SHD I 2 | /RUBOUT? |
| 0217 | 0253 | 6266 | | JMP QAL | /IGNORE |
| 0220 | 0254 | 1422 | | SHD I 2 | /TAB? |
| 0221 | 0255 | 6144 | | JMP QARFSH | /IGNORE |
| 0222 | 0256 | 4263 | | STC ,+5 | /ACCEPTABLE CHAR |
| 0223 | 0257 | 6322 | | JMP QAO | /TEST NEXT CHAR |
| 0224 | 0260 | 6354 | | JMP QAO | /74 BACK PTR UP BY 1 |
| 0225 | 0261 | 6354 | | JMP QAO | /34 + |
| 0226 | 0262 | 1020 | | LDA I | /OK, STORE IT |
| 0227 | 0263 | 0000 | | 0 | |
| 0230 | 0264 | 1344 | | STH 4 | |
| 0231 | 0265 | 6144 | | JMP QARFSH | /REDISPLAY |
| 0232 | 0266 | 1344 | QAI, | LDH 4 | /TO HERE IF RUBBOUT OR < |

| | | | | | |
|------|------|------|------|------------|---|
| 0233 | 0267 | 6323 | | JMP QAO+1 | |
| 0234 | 0270 | 6144 | | JMP QARFSH | /74 IGNORE |
| 0235 | 0271 | 1775 | | -6002 | |
| 0236 | 0272 | 1302 | | LDH 2 | /TEST THE CHAR |
| 0237 | 0273 | 1460 | | SAE I | /RUBOUT? |
| 0240 | 0274 | 0037 | | 37 | |
| 0241 | 0275 | 6354 | | JMP QAO | /NO, BACK PTR UP BY 1 |
| 0242 | 0276 | 0045 | | SET 5 | |
| 0243 | 0277 | 0004 | | 4 | |
| 0244 | 0300 | 0043 | | SET 3 | |
| 0245 | 0301 | 0004 | | 4 | |
| 0246 | 0302 | 6304 | | JMP ,+2 | |
| 0247 | 0303 | 1325 | | LDH I 5 | /BUMP PTR |
| 0250 | 0304 | 1323 | | LDH I 3 | /GET NEXT CHAR |
| 0251 | 0305 | 6323 | | JMP QAO+1 | |
| 0252 | 0306 | 0016 | | NOP | /IF 74 OR 34, REPLACE CURRENT CHAR WITH 0 |
| 0253 | 0307 | 0011 | | CLR | |
| 0254 | 0310 | 1345 | | STH 5 | |
| 0255 | 0311 | 0450 | | AZE | /WAS IT 74 OR 34? |
| 0256 | 0312 | 6303 | | JMP , -7 | /NO, CONTINUE |
| 0257 | 0313 | 6354 | | JMP QAO | /BACK PTR UP BY 1 |
| 0260 | | | | | /TO HERE IF CR |
| 0261 | 0314 | 0206 | QAN, | XSK 6 | |
| 0262 | 0315 | 6402 | | JMP QAK+4 | /EXIT ROUTINE IF NO ANSWER FIELD |
| 0263 | 0316 | 6322 | | JMP QAO | |
| 0264 | 0317 | 6144 | | JMP QARFSH | /74 MOVE PTR TO NEXT QUESTION FIELD |
| 0265 | 0320 | 6142 | | JMP QAE+1 | /34 END OF BUFR, MOVE PTR TO FIRST QUESTION FIELD |
| 0266 | 0321 | 6316 | | JMP QAN+2 | |
| 0267 | | | | | |
| 0270 | 0322 | 1324 | QAO, | LDH I 4 | /S/R |
| 0271 | 0323 | 1420 | | SHD I | / +1 74 BEGIN FIELD |
| 0272 | 0324 | 7400 | | 7400 | / +2 34 END BUFR |
| 0273 | 0325 | 6000 | | JMP 0 | / +3 NEITHER 74 NOR 34 |
| 0274 | 0326 | 1460 | | SAE I | |
| 0275 | 0327 | 0034 | | 34 | |
| 0276 | 0330 | 0220 | | XSK I 0 | |
| 0277 | 0331 | 0220 | | XSK I 0 | |
| 0300 | 0332 | 6000 | | JMP 0 | |
| 0301 | | | | | /S/R TO DISP LINC CHAR IN AC |
| 0302 | 0333 | 0241 | QAP, | ROL 1 | /MULT BY 2 FOR INDEX TO ADDRESS OF TABLE |
| 0303 | 0334 | 2521 | | ADD QAX+4 | |
| 0304 | 0335 | 4002 | | STC 2 | /ADDRESS OF CHAR TO DISP IN XR2 |
| 0305 | 0336 | 2577 | | ADD QAU | /THIS INSTR CHANGES, EITHER OP OR ADD 9U |
| 0306 | 0337 | 2577 | | ADD QAU | |
| 0307 | 0340 | 2001 | | ADD 1 | /ADD 4 TO XR1 TO SPACE CHAR |
| 0310 | 0341 | 4001 | | STC 1 | |
| 0311 | 0342 | 2005 | | ADD 5 | /GET ADDRESS OF ANSWER BUFR |
| 0312 | 0343 | 0017 | | COM | |
| 0313 | 0344 | 2004 | | ADD 4 | |
| 0314 | 0345 | 0450 | | AZE | |
| 0315 | 0346 | 0011 | | CLR | |
| 0316 | 0347 | 4220 | | STC QAI-2 | /SWITCH=0 OR 7777 |
| 0317 | 0350 | 2204 | | ADD QAH-1 | /Y COORDINATE IN AC |
| 0320 | 0351 | 1742 | | DSC 2 | |
| 0321 | 0352 | 1762 | | DSC I 2 | /DISPLAY CHAR |
| 0322 | 0353 | 6000 | | JMP 0 | |
| 0323 | 0354 | 1020 | QAO, | LDA I | /BACK UP PTR BY 1 |
| 0324 | 0355 | 3777 | | -4000 | |
| 0325 | 0356 | 1140 | | ADM | |
| 0326 | 0357 | 0004 | | 4 | |
| 0327 | 0360 | 6144 | | JMP QARFSH | /REDISPLAY |
| 0330 | | | | | / |
| 0331 | 0361 | 1321 | QAT, | LDH I 1 | /S/R |

| | | | | | | |
|------|------|------|------|-----------|---|---------------------------------|
| 0332 | 0362 | 1420 | | SHD I | / | +1 F |
| 0333 | 0363 | 0600 | | 0600 | / | +2 |
| 0333 | 0364 | 6000 | | JMP 0 | / | +3 EITHER |
| 0335 | 0365 | 1460 | | SAE I | | |
| 0336 | 0366 | 0010 | | 10 | | |
| 0337 | 0367 | 0220 | | XSK I 0 | | |
| 0340 | 0370 | 0220 | | XSK I 0 | | |
| 0341 | 0371 | 6000 | | JMP 0 | | |
| 0342 | | | | | / | |
| 0343 | 0372 | 1323 | QAZ, | LDH I 3 | | |
| 0344 | 0373 | 1020 | | LDA I | | |
| 0345 | 0374 | 0040 | | 40 | | |
| 0346 | 0375 | 6216 | | JMP QAI-4 | | |
| 0347 | | | | | | /TO HERE IF > |
| 0350 | 0376 | 1324 | QAK, | LDH I 4 | | |
| 0351 | 0377 | 0470 | | AZE I | | /IS CURRENT CHAR BLANK? |
| 0352 | 0400 | 6354 | | JMP QAQ | | /YES, IGNORE |
| 0353 | 0401 | 6515 | | JMP QAX | | /MOVE DOT FORWARD |
| 0354 | | | | | | /TO HERE TO EXIT WITH SKIP |
| 0355 | 0402 | 1020 | | LDA I | | |
| 0356 | 0403 | 0001 | | 1 | | |
| 0357 | 0404 | 1140 | | ADM | | |
| 0360 | 0405 | 0075 | | QAB | | |
| 0361 | 0406 | 6075 | | JMP QAB | | |
| 0362 | | | | | | /CHARACTER PATTERNS |
| 0363 | 0407 | 0101 | QAV, | 0101 | | /KBD 0, ILLEGAL, USED AS MARKER |
| 0364 | 0410 | 0101 | | 0101 | | |
| 0365 | 0411 | 4477 | | 4477 | | /1:A |
| 0366 | 0412 | 7744 | | 7744 | | |
| 0367 | 0413 | 5177 | | 5177 | | /2:B |
| 0370 | 0414 | 2651 | | 2651 | | |
| 0371 | 0415 | 4136 | | 4136 | | /3:C |
| 0372 | 0416 | 2241 | | 2241 | | |
| 0373 | 0417 | 4177 | | 4177 | | /4:D |
| 0374 | 0420 | 3641 | | 3641 | | |
| 0375 | 0421 | 4577 | | 4577 | | /5:E |
| 0376 | 0422 | 4145 | | 4145 | | |
| 0377 | 0423 | 4477 | | 4477 | | /6:F |
| 0400 | 0424 | 4044 | | 4044 | | |
| 0401 | 0425 | 4136 | | 4136 | | /7:G |
| 0402 | 0426 | 2645 | | 2645 | | |
| 0403 | 0427 | 1077 | | 1077 | | /10:H |
| 0404 | 0430 | 7710 | | 7710 | | |
| 0405 | 0431 | 7741 | | 7741 | | /11:I |
| 0406 | 0432 | 0041 | | 0041 | | |
| 0407 | 0433 | 4142 | | 4142 | | /12:J |
| 0410 | 0434 | 4076 | | 4076 | | |
| 0411 | 0435 | 1077 | | 1077 | | /13:K |
| 0412 | 0436 | 4324 | | 4324 | | |
| 0413 | 0437 | 0177 | | 0177 | | /14:L |
| 0414 | 0440 | 0301 | | 0301 | | |
| 0415 | 0441 | 3077 | | 3077 | | /15:M |
| 0416 | 0442 | 7730 | | 7730 | | |
| 0417 | 0443 | 3077 | | 3077 | | /16:N |
| 0420 | 0444 | 7706 | | 7706 | | |
| 0421 | 0445 | 4177 | | 4177 | | /17:O |
| 0422 | 0446 | 7741 | | 7741 | | |
| 0423 | 0447 | 4477 | | 4477 | | /20:P |
| 0424 | 0450 | 3044 | | 3044 | | |
| 0425 | 0451 | 4276 | | 4276 | | /21:Q |
| 0426 | 0452 | 0376 | | 0376 | | |
| 0427 | 0453 | 4477 | | 4477 | | /22:R |
| | | | | 3144 | | |

| | | | | | |
|------|------|------|------|------------|--|
| 0431 | 0455 | 5121 | | 5121 | /23:J |
| 0432 | 0456 | 4651 | | 4651 | |
| 0433 | 0457 | 4040 | | 4040 | /24:J |
| 0434 | 0460 | 4077 | | 4077 | |
| 0435 | 0461 | 0177 | | 0177 | /25:U |
| 0436 | 0462 | 7701 | | 7701 | |
| 0437 | 0463 | 0176 | | 0176 | /26:V |
| 0440 | 0464 | 7402 | | 7402 | |
| 0441 | 0465 | 0677 | | 0677 | /27:W |
| 0442 | 0466 | 7701 | | 7701 | |
| 0443 | 0467 | 1463 | | 1463 | /30:X |
| 0444 | 0470 | 6314 | | 6314 | |
| 0445 | 0471 | 0770 | | 0770 | /31:Y |
| 0446 | 0472 | 7007 | | 7007 | |
| 0447 | 0473 | 4543 | | 4543 | /32:Z |
| 0450 | 0474 | 6151 | | 6151 | |
| 0451 | 0475 | 4177 | | 4177 | /33: / |
| 0452 | 0476 | 0000 | | 0000 | |
| 0453 | | | | | /34:BACKSLASH IGNORED ON INPUT |
| 0454 | 0477 | 0000 | | 0 | /NOT USED |
| 0455 | 0500 | 0000 | | 0 | /NOT USED |
| 0456 | 0501 | 0000 | | 0000 | /35:] |
| 0457 | 0502 | 7741 | | 7741 | |
| 0460 | | | | | /CODES 36:ALT, 37:RUBOUT NOT DISPLAYED |
| 0461 | 0503 | 4543 | GAY, | 4543 | /LF,CR |
| 0462 | 0504 | 7476 | | 7476 | /<<,> |
| 0463 | 0505 | 3634 | | 3634 | /ALT, BACKSLASH |
| 0464 | 0506 | 3747 | | 3747 | /RUBOUT, TAB |
| 0465 | 0507 | 0000 | | 0000 | /40:SPACE |
| 0466 | 0510 | 0000 | | 0000 | |
| 0467 | 0511 | 7500 | | 7500 | /41:X! |
| 0470 | 0512 | 0000 | | 0000 | |
| 0471 | 0513 | 7000 | | 7000 | /42:" |
| 0472 | 0514 | 0070 | | 0070 | |
| 0473 | | | | | /CODES 43:, 44:, 45:LF NOT DISPLAYED |
| 0474 | 0515 | 6323 | GAX, | JMP QAO*1 | |
| 0475 | 0516 | 6354 | | JMP QAQ | |
| 0476 | 0517 | 6354 | | JMP QAQ | |
| 0477 | 0520 | 6144 | | JMP QARFSH | |
| 0500 | 0521 | 0407 | | QAV | |
| 0501 | 0522 | 0000 | | 0 | /NOT USED |
| 0502 | 0523 | 5166 | | 5166 | /46: & |
| 0503 | 0524 | 0526 | | 0526 | |
| 0504 | | | | | /CODE 47:TAB NOT DISPLAYED |
| 0505 | 0525 | 0000 | | 0 | /NOT USED |
| 0506 | 0526 | 0000 | | 0 | /NOT USED |
| 0507 | 0527 | 3600 | | 3600 | /50:(|
| 0510 | 0530 | 0041 | | 0041 | |
| 0511 | 0531 | 4100 | | 4100 | /51:) |
| 0512 | 0532 | 0036 | | 0036 | |
| 0513 | 0533 | 2050 | | 2050 | /52:* |
| 0514 | 0534 | 0050 | | 0050 | |
| 0515 | 0535 | 0404 | | 0404 | /53:+ |
| 0516 | 0536 | 0437 | | 0437 | |
| 0517 | 0537 | 0500 | | 0500 | /54:, |
| 0520 | 0540 | 0006 | | 0006 | |
| 0521 | 0541 | 0404 | | 0404 | /55:- |
| 0522 | 0542 | 0404 | | 0404 | |
| 0523 | 0543 | 0001 | | 0001 | /56:, |
| 0524 | 0544 | 0000 | | 0000 | |
| 0525 | 0545 | 0601 | | 0601 | /57: / |
| 0526 | 0546 | 4030 | | 4030 | |
| 0527 | 0547 | 4536 | | 4536 | /60:0 |

| | | | | | |
|------|------|------|-------------------------|------------|---------------------------|
| 0530 | 0550 | 3651 | | 3651 | |
| 053 | 0551 | 2101 | | 2101 | /61:1 |
| 053 | 0552 | 0177 | | 0177 | |
| 0533 | 0553 | 4523 | | 4523 | /62:2 |
| 0534 | 0554 | 2151 | | 2151 | |
| 0535 | 0555 | 4122 | | 4122 | /63:3 |
| 0536 | 0556 | 2651 | | 2651 | |
| 0537 | 0557 | 2414 | | 2414 | /64:4 |
| 0540 | 0560 | 0477 | | 0477 | |
| 0541 | 0561 | 5172 | | 5172 | /65:5 |
| 0542 | 0562 | 0651 | | 0651 | |
| 0543 | 0563 | 1506 | | 1506 | /66:6 |
| 0544 | 0564 | 4225 | | 4225 | |
| 0545 | 0565 | 4443 | | 4443 | /67:7 |
| 0546 | 0566 | 6050 | | 6050 | |
| 0547 | 0567 | 5126 | | 5126 | /70:8 |
| 0550 | 0570 | 2651 | | 2651 | |
| 0551 | 0571 | 5122 | | 5122 | /71:9 |
| 0552 | 0572 | 3651 | | 3651 | |
| 0553 | 0573 | 2200 | | 2200 | /72:1 |
| 0554 | 0574 | 0000 | | 0000 | |
| 0555 | 0575 | 4601 | | 4601 | /73:1 |
| 0556 | 0576 | 0000 | | 0000 | |
| 0557 | | | | | /CODE 74:<NOT DISPLAYED |
| 0560 | 0577 | 0002 | GAU, | 2 | /CONSTANT |
| 0561 | 0600 | 0000 | | 0 | /NOT USED |
| 0562 | 0601 | 1212 | | 1212 | /75:= |
| 0563 | 0602 | 1212 | | 1212 | |
| 0564 | | | | | /CODE 76:> NOT DISPLAYED |
| 0565 | 0603 | 0016 | QAW, | NOP | |
| 0566 | 0604 | 2577 | | ADD QAU | |
| 0567 | 0605 | 4020 | | 4020 | /77:? |
| 0570 | 0606 | 2055 | | 2055 | |
| 0571 | | | / | | |
| 0572 | 0607 | 1760 | QAF, | DSC I | |
| 0573 | 0610 | 6000 | | 6000 | |
| 0574 | 0611 | 6222 | | JMP QAI | |
| 0575 | | | / | | |
| 0576 | | | | | /END Q+A |
| 0577 | | | / | | |
| 0600 | | | / | | |
| 0601 | | | / | | |
| 0602 | | | / | | |
| 0603 | | | /KEYBOARD INPUT ROUTINE | | |
| 0604 | | | / | | |
| 0605 | | | LKRB= 6036 | | /PDP-8 IOT KBD |
| 0606 | | | LTSF= 6041 | | /TSF |
| 0607 | | | LTLS= 6046 | | /TLS |
| 0610 | | | / | | |
| 0611 | 0612 | 1000 | GETKBD, LDA | | |
| 0612 | 0613 | 0000 | | 0 | |
| 0613 | 0614 | 4734 | | STC EXIT+6 | /SAVE RETURN |
| 0614 | 0615 | 2001 | | ADD 1 | /SAVE XRS 1 AND 2 |
| 0615 | 0616 | 4731 | | STC EXIT+3 | |
| 0616 | 0617 | 2002 | | ADD 2 | |
| 0617 | 0620 | 4733 | | STC EXIT+5 | |
| 0620 | 0621 | 4727 | | STC EXIT+1 | |
| 0621 | 0622 | 0415 | | KST | /WAS SOMETHING TYPED? |
| 0622 | 0623 | 6000 | | JMP 0 | /NO! EXIT |
| 0623 | 0624 | 0500 | | IOB | |
| 0624 | 0625 | 6036 | | LKRB | /GET TTY CHAR, CLEAR FLAG |
| 0625 | 0626 | 1060 | | STA I | /SAVE IT |
| 0626 | 0627 | 0000 | TY. | 0 | |

| | | | | |
|------|------|------|--------------|-------------------------------------|
| 0627 | 0630 | 1120 | ADA I | |
| 0630 | 0631 | 7540 | -237 | |
| 0631 | 0632 | 0451 | AP0 | /BETWEEN 200 AND 237? |
| 0632 | 0633 | 6675 | JMP CNTRL | /CONTROL CHAR. CHECK FOR CR,LF, TAB |
| 0633 | | | | |
| 0634 | 0634 | 0061 | SET I 1 | /NO |
| 0635 | 0635 | 0745 | CHARS-1 | |
| 0636 | 0636 | 0062 | SET I 2 | |
| 0637 | 0637 | 7770 | -7 | |
| 0640 | 0640 | 1000 | LDA | |
| 0641 | 0641 | 0627 | TY | |
| 0642 | 0642 | 1461 | SAE I 1 | |
| 0643 | 0643 | 6645 | JMP ,+2 | |
| 0644 | 0644 | 6726 | JMP EXIT | /ILLEGAL CHAR. DON T ECHO |
| 0645 | 0645 | 0222 | XSK I 2 | /CHECKED THEM ALL? |
| 0646 | 0646 | 6642 | JMP , -4 | |
| 0647 | | | | |
| 0650 | 0647 | 1120 | ADA I | |
| 0651 | 0650 | 7440 | -337 | |
| 0652 | 0651 | 0451 | AP0 | /BETWEEN 240 AND 337? |
| 0653 | 0652 | 6666 | JMP LEGAL | /YES. LEGAL CHAR |
| 0654 | | | | |
| 0655 | 0653 | 1461 | SAE I 1 | /NO. CHECK FURTHER, |
| 0656 | 0654 | 6663 | JMP ,+7 | |
| 0657 | 0655 | 1020 | LDA I | /RUBOUT |
| 0660 | 0656 | 0334 | 334 | |
| 0661 | 0657 | 6735 | JMP TPE | /ECHO BACKSLASH |
| 0662 | 0660 | 1020 | LDA I | |
| 0663 | 0661 | 0037 | 37 | |
| 0664 | 0662 | 6730 | JMP EXIT+2 | /LEGAL EXIT |
| 0665 | | | | |
| 0666 | 0663 | 1461 | SAE I 1 | |
| 0667 | 0664 | 6726 | JMP EXIT | /ILLEGAL |
| 0670 | | | | /ALT |
| 0671 | 0665 | 6730 | JMP EXIT+2 | /EXIT, DON T ECHO |
| 0672 | | | | |
| 0673 | 0666 | 1000 | LEGAL, LDA | |
| 0674 | 0667 | 0627 | TY | |
| 0675 | 0670 | 6735 | JMP TPE | /ECHO CHAR |
| 0676 | 0671 | 2627 | ADD TY | |
| 0677 | 0672 | 1560 | BCL I | /STRIP IT TO 6-BIT |
| 0700 | 0673 | 7700 | 7700 | |
| 0701 | 0674 | 6730 | JMP EXIT+2 | |
| 0702 | | | | /TO HERE IF CONTROL CHAR |
| 0703 | 0675 | 1460 | CNTRL, SAE I | |
| 0704 | 0676 | 7755 | 7755 | |
| 0705 | 0677 | 6712 | JMP CKLF | |
| 0706 | 0700 | 1020 | LDA I | /CR |
| 0707 | 0701 | 0043 | 43 | |
| 0710 | 0702 | 4727 | STC EXIT+1 | |
| 0711 | 0703 | 1020 | LDA I | |
| 0712 | 0704 | 0215 | 215 | |
| 0713 | 0705 | 6735 | JMP TPE | |
| 0714 | 0706 | 1020 | LDA I | |
| 0715 | 0707 | 0212 | 212 | |
| 0716 | 0710 | 6735 | JMP TPE | |
| 0717 | 0711 | 6726 | JMP EXIT | |
| 0720 | | | | |
| 0721 | 0712 | 1460 | CKLF, SAE I | |
| 0722 | 0713 | 7752 | 7752 | |
| 0723 | 0714 | 6720 | JMP ,+4 | |
| 0724 | 0715 | 1020 | LDA I | /LF |
| 0725 | 0716 | 0045 | 45 | |

| | | | | |
|------|------|------|---------------------|-------------------|
| 0726 | 0717 | 6702 | JMP CNTRL+5 | |
| 0727 | 0720 | 1460 | SAE I | |
| 0730 | 0721 | 7751 | 7751 | |
| 0731 | 0722 | 6726 | JMP EXIT | /ILLEGAL |
| 0732 | 0723 | 1020 | LDA I | |
| 0733 | 0724 | 0047 | 47 | |
| 0734 | 0725 | 6730 | JMP EXIT+2 | /EXIT, DON T ECHO |
| 0735 | | | / | |
| 0736 | 0726 | 1020 | EXIT, LDA I | /GET 6-BIT ASCII |
| 0737 | 0727 | 0000 | 0 | |
| 0740 | 0730 | 0061 | SET I 1 | /RESTORE XRS |
| 0741 | 0731 | 0000 | 0 | |
| 0742 | 0732 | 0062 | SET I 2 | |
| 0743 | 0733 | 0000 | 0 | |
| 0744 | 0734 | 6000 | JMP | /EXIR S/R GETKBD |
| 0745 | | | /S/R TO PRINT C(AC) | |
| 0746 | 0735 | 0500 | TPE, IOB | |
| 0747 | 0736 | 6046 | LTLS | /PRINT IT |
| 0750 | 0737 | 1000 | LDA | |
| 0751 | 0740 | 0000 | 0 | |
| 0752 | 0741 | 4745 | STC ,+4 | /SAVE RETURN |
| 0753 | 0742 | 0500 | IOB | |
| 0754 | 0743 | 6041 | LTSF | |
| 0755 | 0744 | 6742 | JMP ,-2 | /WAIT FOR FLAG |
| 0756 | 0745 | 6000 | JMP | /EXIT |
| 0757 | 0746 | 0243 | CHARS, 243 | /HASH |
| 0760 | 0747 | 0244 | 244 | /DOLLAR SIGN |
| 0761 | 0750 | 0245 | 245 | /PER CENT |
| 0762 | 0751 | 0247 | 247 | /APOSTROPHE |
| 0763 | 0752 | 0300 | 300 | /AT SIGN |
| 0764 | 0753 | 0336 | 336 | /UP ARROW |
| 0765 | 0754 | 0337 | 337 | /BACK ARROW |
| 0766 | 0755 | 0040 | 40 | /RUBOUT |
| 0767 | 0756 | 0036 | 36 | /ALT |
| 0770 | | | /END OF S/R GETKBD | |
| 0771 | 0757 | 0060 | CONV, 60 | /0-9 |
| 0772 | 0760 | 0061 | 61 | |
| 0773 | 0761 | 0062 | 62 | |
| 0774 | 0762 | 0063 | 63 | |
| 0775 | 0763 | 0064 | 64 | |
| 0776 | 0764 | 0065 | 65 | |
| 0777 | 0765 | 0066 | 66 | |
| 1000 | 0766 | 0067 | 67 | |
| 1001 | 0767 | 0070 | 70 | |
| 1002 | 0770 | 0071 | 71 | |
| 1003 | 0771 | 0043 | 43 | /CR |
| 1004 | 0772 | 0037 | 37 | /RO |
| 1005 | 0773 | 0040 | 40 | /SPACE |
| 1006 | 0774 | 0011 | 11 | /I |
| 1007 | 0775 | 0056 | 56 | /P |
| 1010 | 0776 | 0055 | 55 | /- |
| 1011 | 0777 | 0053 | 53 | /+ |
| 1012 | 1000 | 0034 | 34 | /VERT BAR |
| 1013 | 1001 | 0032 | 32 | /LB |
| 1014 | 1002 | 0036 | 36 | /CASE |
| 1015 | 1003 | 0001 | 01 | /A-Z |
| 1016 | 1004 | 0002 | 02 | |
| 1017 | 1005 | 0003 | 03 | |
| 1020 | 1006 | 0004 | 04 | |
| 1021 | 1007 | 0005 | 05 | |
| 1022 | 1010 | 0006 | 06 | |
| 1023 | 1011 | 0007 | 07 | |
| 1024 | 1012 | 0010 | 10 | |

| | | | | |
|------|------|------|----|-------------------|
| 1025 | 1013 | 0011 | 11 | |
| 1026 | 1014 | 0012 | 12 | |
| 1027 | 1015 | 0013 | 13 | |
| 1030 | 1016 | 0014 | 14 | |
| 1031 | 1017 | 0015 | 15 | |
| 1032 | 1020 | 0016 | 16 | |
| 1033 | 1021 | 0017 | 17 | |
| 1034 | 1022 | 0020 | 20 | |
| 1035 | 1023 | 0021 | 21 | |
| 1036 | 1024 | 0022 | 22 | |
| 1037 | 1025 | 0023 | 23 | |
| 1040 | 1026 | 0024 | 24 | |
| 1041 | 1027 | 0025 | 25 | |
| 1042 | 1030 | 0026 | 26 | |
| 1043 | 1031 | 0027 | 27 | |
| 1044 | 1032 | 0030 | 30 | |
| 1045 | 1033 | 0031 | 31 | |
| 1046 | 1034 | 0032 | 32 | /Z |
| 1047 | 1035 | 0045 | 45 | /LF |
| 1050 | 1036 | 0077 | 77 | |
| 1051 | 1037 | 0077 | 77 | /? |
| 1052 | 1040 | 0075 | 75 | /= |
| 1053 | 1041 | 0025 | 25 | /U |
| 1054 | 1042 | 0054 | 54 | /COMMA |
| 1055 | 1043 | 0056 | 56 | /PERIOD |
| 1056 | 1044 | 0052 | 52 | /ORIGIN |
| 1057 | 1045 | 0057 | 57 | /LT BRAC TO SLASH |
| 1060 | 1046 | 0077 | 77 | /UNDERLINE?? |
| 1061 | 1047 | 0074 | 74 | /QUOTES |
| 1062 | 1050 | 0076 | 76 | /QUOTES |
| 1063 | 1051 | 0074 | 74 | /QUOTES |
| 1064 | 1052 | 0076 | 76 | /QUOTES |
| 1065 | 1053 | 0035 | 35 | /RT BRACKET |
| 1066 | 1054 | 0052 | 52 | |
| 1067 | 1055 | 0072 | 72 | /COLON |
| 1070 | 1056 | 0000 | 00 | |
| 1071 | 1057 | 0047 | 47 | /TAB |
| 1072 | 1060 | 1020 | | SETUP, LDA I |
| 1073 | 1061 | 4000 | | 4000 |
| 1074 | 1062 | 1040 | | STA |
| 1075 | 1063 | 1152 | | BNIN |
| 1076 | 1064 | 1000 | | LDA |
| 1077 | 1065 | 0067 | | ANS1+1 |
| 1100 | 1066 | 0450 | | AZE |
| 1101 | 1067 | 7077 | | JMP SETUP1 |
| 1102 | 1070 | 1300 | | LDH |
| 1103 | 1071 | 4066 | | ANS1+4000 |
| 1104 | 1072 | 1560 | | BCL I |
| 1105 | 1073 | 0070 | | 70 |
| 1106 | 1074 | 1140 | | ADM |
| 1107 | 1075 | 1152 | | BNIN |
| 1110 | 1076 | 7145 | | JMP SETUP3 |
| 1111 | 1077 | 1300 | | SETUP1, LDH |
| 1112 | 1100 | 4067 | | ANS1+4001 |
| 1113 | 1101 | 0450 | | AZE |
| 1114 | 1102 | 7121 | | JMP SETUP2 |
| 1115 | 1103 | 1300 | | LDH |
| 1116 | 1104 | 0067 | | ANS1+1 |
| 1117 | 1105 | 1560 | | BCL I |
| 1120 | 1106 | 0070 | | 70 |
| 1121 | 1107 | 1140 | | ADM |
| 1122 | 1110 | 1152 | | BNIN |
| 1123 | 1111 | 1300 | | LDH |

```

1124      1112  4066      ANS1+4000
1125      1113  1560      BCL I
1126      1114  0070      70
1127      1115  0243      ROL 3
1130      1116  1140      ADM
1131      1117  1152      BNIN
1132      1120  7145      JMP SETUP3
1133      1121  1560      SETUP2, BCL I
1134      1122  0070      70
1135      1123  1140      ADM
1136      1124  1152      BNIN
1137      1125  1300      LDH
1140      1126  0067      ANS1+1
1141      1127  1560      BCL I
1142      1130  0070      70
1143      1131  0243      ROL 3
1144      1132  1140      ADM
1145      1133  1152      BNIN
1146      1134  1300      LDH
1147      1135  4066      ANS1+4000
1150      1136  1560      BCL I
1151      1137  0070      70
1152      1140  0246      ROL 6
1153      1141  1140      ADM
1154      1142  1152      BNIN
1155      1143  1040      STA
1156      1144  1526      NBNIN
1157      1145  1120      SETUP3, ADA I
1160      1146  1001      1001
1161      1147  1040      STA
1162      1150  1154      BNIN1
1163      /READ INITIAL BLOCKS IN
1164      1151  0710      OVRTEX, RDC U
1165      1152  0000      BNIN, 0 /2000-2377
1166      1153  0710      RDC U
1167      1154  0000      BNIN1, 0 /2400-2777
1170      1155  0070      SET I 10
1171      1156  5166      4\INIT-1
1172      1157  0071      SET I 11 /Q6:3000-3377
1173      1160  6777      6777
1174      1161  1330      LDH I 10
1175      1162  0450      AZE /NULL?
1176      1163  7165      JMP ,+2
1177      1164  7251      JMP OVRIN /END
1200      1165  1371      STH I 11
1201      1166  7161      JMP ,-5
1202      1167  5262
1202      INIT, TEXT >*20
1203      1170  6043
1203      1171  5724
1203      1172  1011
1203      1173  2340
1203      1174  2022
1203      1175  1707
1203      1176  2201
1203      1177  1540
1203      1200  0417
1203      /THIS PROGRAM DOES
1204      1201  0523
1204      1202  4357
1204      1203  1617
1204      1204  2440
1204      1205  2422

```

| | | |
|------|------|--------------------|
| 1200 | 0110 | |
| 1204 | 1207 | 2314 |
| 1204 | 1210 | 0124 |
| 1204 | 1211 | 0540 |
| 1204 | 1212 | 0114 |
| 1204 | | /NOT TRANSLATE ALL |
| 1205 | 1213 | 1443 |
| 1205 | 1214 | 5723 |
| 1205 | 1215 | 1124 |
| 1205 | 1216 | 2501 |
| 1205 | 1217 | 2411 |
| 1205 | 1220 | 1716 |
| 1205 | | /SITUATIONS, |
| 1206 | 1221 | 2356 |
| 1206 | 1222 | 4357 |
| 1206 | 1223 | 0310 |
| 1206 | 1224 | 0503 |
| 1206 | 1225 | 1340 |
| 1206 | 1226 | 1411 |
| 1206 | 1227 | 2324 |
| 1206 | 1230 | 1116 |
| 1206 | 1231 | 0741 |
| 1206 | | /CHECK LISTING!! |
| 1207 | 1232 | 4143 |
| 1207 | 1233 | 3224 |
| 1207 | 1234 | 0175 |
| 1207 | | ZTA=5 |
| 1210 | 1235 | 6543 |
| 1210 | 1236 | 1415 |
| 1210 | 1237 | 0275 |
| 1210 | 1240 | 6066 |
| 1210 | | LMB=0600 |
| 1211 | 1241 | 6060 |
| 1211 | 1242 | 4325 |
| 1211 | 1243 | 1502 |
| 1211 | 1244 | 7560 |
| 1211 | 1245 | 6664 |
| 1211 | | UMB=0640 |
| 1212 | 1246 | 6043 |
| 1212 | 1247 | 4000 |
| 1212 | | > |
| 1213 | 1250 | 0000 |
| 1214 | 1251 | 0070 |
| 1215 | 1252 | 6001 |
| 1216 | 1253 | 1020 |
| 1217 | 1254 | 6370 |
| 1220 | 1255 | 1040 |
| 1221 | 1256 | 1601 |
| 1222 | 1257 | 7476 |
| 1223 | 1260 | 1460 |
| 1224 | 1261 | 0066 |
| 1225 | 1262 | 7311 |
| 1226 | | /COMMENT MODE |
| 1227 | 1263 | 1460 |
| 1230 | 1264 | 0012 |
| 1231 | 1265 | 7306 |
| 1232 | | /END OF COMMENT |
| 1233 | 1266 | 7570 |
| 1234 | 1267 | 0052 |
| 1235 | 1270 | 0010 |
| 1236 | 1271 | 1332 |
| 1237 | 1272 | 1460 |
| 1240 | 1273 | 0066 |

```

OVRIN, SET I 10
        4\2001
        LDA I
        6370
        STA
        TPOUT
START,  JMP HWD
        SAE I
        66
        JMP TXMETA
        /COMMENT MODE
COMMT,  SAE I
        12
        JMP MOCT
        /END OF COMMENT
MORE,   JMP LINC
        SET 12
        10
        LDH I 12
        SAE I
        66

```


| | | | | |
|------|------|------|---------|---------------|
| 1241 | 1274 | 7276 | JMP | .,+2 |
| 1242 | 1275 | 7257 | JMP | START |
| 1243 | 1276 | 1460 | SAE | I |
| 1244 | 1277 | 0022 | | 22 |
| 1245 | 1300 | 7302 | JMP | .,+2 |
| 1246 | 1301 | 7257 | JMP | START |
| 1247 | 1302 | 1020 | MO1, | LDA I |
| 1250 | 1303 | 0100 | | 100 |
| 1251 | 1304 | 7570 | JMP | LINCD |
| 1252 | 1305 | 7257 | JMP | START |
| 1253 | | | /MORE | COMMENTS |
| 1254 | 1306 | 7570 | MOCT, | JMP LINCD |
| 1255 | 1307 | 7476 | | JMP HWD |
| 1256 | 1310 | 7263 | | JMP COMMT |
| 1257 | | | /CHECK | FOR TEXT META |
| 1260 | 1311 | 1460 | TXMETA, | SAE I |
| 1261 | 1312 | 0070 | | 70 /ALT-A |
| 1262 | 1313 | 7342 | | JMP ICK |
| 1263 | 1314 | 1020 | TXBG, | LDA I |
| 1264 | 1315 | 0047 | | 0047 |
| 1265 | 1316 | 7570 | JMP | LINCD |
| 1266 | 1317 | 1020 | LDA | I |
| 1267 | 1320 | 0030 | | 0030 |
| 1270 | 1321 | 7570 | JMP | LINCD |
| 1271 | 1322 | 1020 | LDA | I |
| 1272 | 1323 | 0053 | | 53 |
| 1273 | 1324 | 7570 | JMP | LINCD |
| 1274 | 1325 | 1020 | LDA | I |
| 1275 | 1326 | 0047 | | 47 |
| 1276 | 1327 | 7570 | JMP | LINCD |
| 1277 | 1330 | 7532 | JMP | SPACE |
| 1300 | 1331 | 1020 | LDA | I |
| 1301 | 1332 | 0071 | | 71 |
| 1302 | 1333 | 7570 | TXAGIN, | JMP LINCD |
| 1303 | 1334 | 7476 | | JMP HWD |
| 1304 | 1335 | 1460 | SAE | I |
| 1305 | 1336 | 0071 | | 71 |
| 1306 | 1337 | 7333 | JMP | TXAGIN |
| 1307 | | | /END | OF TEXT META |
| 1310 | 1340 | 7570 | JMP | LINCD |
| 1311 | 1341 | 7257 | JMP | START |
| 1312 | | | /SMALL | I CHECK |
| 1313 | 1342 | 1460 | ICK, | SAE I |
| 1314 | 1343 | 0015 | | 15 |
| 1315 | 1344 | 7350 | JMP | UCK |
| 1316 | | | /SMALL | I |
| 1317 | 1345 | 7570 | JMP | LINCD |
| 1320 | 1346 | 7532 | JMP | SPACE |
| 1321 | 1347 | 7257 | JMP | START |
| 1322 | | | /SMALL | U CHECK |
| 1323 | 1350 | 1460 | UCK, | SAE I |
| 1324 | 1351 | 0062 | | 62 |
| 1325 | 1352 | 7356 | JMP | TAGCK |
| 1326 | | | /SMALL | U |
| 1327 | 1353 | 7570 | JMP | LINCD |
| 1330 | 1354 | 7532 | JMP | SPACE |
| 1331 | 1355 | 7257 | JMP | START |
| 1332 | | | /TAG | CHECK |
| 1333 | 1356 | 1460 | TAGCK, | SAE I |
| 1334 | 1357 | 0022 | | 22 |
| 1335 | 1360 | 7365 | JMP | SYMCK |
| 1336 | | | /TAG | |
| 1337 | 1361 | 7476 | JMP | HWD |

| | | | |
|------|------|------|----------------------------|
| 1341 | 1363 | 7541 | JMP SWAP |
| 1342 | 1364 | 7302 | JMP COMMA |
| 1343 | | | JMP M01 |
| 1344 | 1365 | 0052 | /SYMBOL CHECK |
| 1345 | 1366 | 0010 | SYMCK, SET 12 |
| 1346 | 1367 | 1120 | 10 |
| 1347 | 1370 | 7766 | ADA I |
| 1350 | 1371 | 0471 | -11 |
| 1351 | 1372 | 7412 | APO I /NUMBER? |
| 1352 | 1373 | 0052 | JMP TERM |
| 1353 | 1374 | 0010 | SET 12 /YES |
| 1354 | 1375 | 1332 | 10 |
| 1355 | 1376 | 1120 | LDH I 12 /PEEK AT NEXT HWD |
| 1356 | 1377 | 7722 | ADA I |
| 1357 | 1400 | 0471 | -55 /Z OR BELOW |
| 1360 | 1401 | 7412 | APO I |
| 1361 | 1402 | 1312 | JMP TERM |
| 1362 | 1403 | 1120 | LDH 12 /YES |
| 1363 | 1404 | 7754 | ADA I |
| 1364 | 1405 | 0451 | -23 |
| 1365 | 1406 | 7412 | APO |
| 1366 | 1407 | 1310 | JMP TERM |
| 1367 | 1410 | 7550 | LDH 10 /YES,A-Z |
| 1370 | 1411 | 7257 | JMP SWAP |
| 1371 | 1412 | 1310 | JMP START |
| 1372 | 1413 | 1460 | TERM, LDH 10 |
| 1373 | 1414 | 0077 | SAE I |
| 1374 | 1415 | 7420 | 77 |
| 1375 | 1416 | 7570 | JMP ,+3 |
| 1376 | 1417 | 7627 | JMP LINC0 |
| 1377 | 1420 | 0052 | JMP QUIT |
| 1400 | 1421 | 0010 | MNEM, SET 12 |
| 1401 | 1422 | 1120 | 10 |
| 1402 | 1423 | 7722 | ADA I |
| 1403 | 1424 | 0471 | -55 |
| 1404 | 1425 | 7467 | APO I |
| 1405 | 1426 | 1312 | JMP CRMORE |
| 1406 | 1427 | 1120 | LDH 12 |
| 1407 | 1430 | 7754 | ADA I |
| 1410 | 1431 | 0451 | -23 |
| 1411 | 1432 | 7467 | APO |
| 1412 | | | JMP CRMORE |
| 1413 | | | /LETTER, IS NEXT CHAR |
| 1414 | 1433 | 1332 | /A LETTER? |
| 1415 | 1434 | 1120 | LDH I 12 |
| 1416 | 1435 | 7722 | ADA I |
| 1417 | 1436 | 0471 | -55 |
| 1420 | 1437 | 7467 | APO I |
| 1421 | 1440 | 1312 | JMP CRMORE |
| 1422 | 1441 | 1120 | LDH 12 |
| 1423 | 1442 | 7754 | ADA I |
| 1424 | 1443 | 0451 | -23 |
| 1425 | 1444 | 7467 | APO |
| 1426 | | | JMP CRMORE |
| 1427 | 1445 | 1332 | /YES, CHECK LAST CHAR |
| 1430 | 1446 | 1120 | LDH I 12 |
| 1431 | 1447 | 7722 | ADA I |
| 1432 | 1450 | 0471 | -55 |
| 1433 | 1451 | 7467 | APO I |
| 1434 | 1452 | 1312 | JMP CRMORE |
| 1435 | 1453 | 1120 | LDH 12 |
| 1436 | 1454 | 7754 | ADA I |
| | | | -23 |

| | | | |
|------|------|------|------------------------|
| 1437 | 1455 | 0451 | APD |
| 1440 | 1456 | 7467 | JMP CRMORE |
| 1441 | 1457 | 1310 | LDH 10 |
| 1442 | 1460 | 7570 | JMP LINCD |
| 1443 | 1461 | 7476 | JMP HWD |
| 1444 | 1462 | 7570 | JMP LINCD |
| 1445 | 1463 | 7476 | JMP HWD |
| 1446 | 1464 | 7570 | JMP LINCD |
| 1447 | 1465 | 7532 | JMP SPACE |
| 1450 | 1466 | 7257 | JMP START |
| 1451 | 1467 | 1312 | CRMORE, LDH 12 |
| 1452 | 1470 | 1460 | SAE I |
| 1453 | 1471 | 0012 | 12 |
| 1454 | 1472 | 7474 | JMP ,+2 |
| 1455 | 1473 | 7266 | JMP MORE |
| 1456 | 1474 | 7570 | JMP LINCD |
| 1457 | 1475 | 7257 | JMP START |
| 1460 | | | /HWD MUST CHECK |
| 1461 | | | /FOR END OF Q4 |
| 1462 | | | /AND BRING-IN NEW |
| 1463 | | | /HALF WORD |
| 1464 | 1476 | 0011 | HWD, CLR |
| 1465 | 1477 | 2000 | ADD 0 |
| 1466 | 1500 | 5510 | STC BACK |
| 1467 | 1501 | 1000 | LDA |
| 1470 | 1502 | 0010 | 10 |
| 1471 | 1503 | 1460 | SAE I |
| 1472 | 1504 | 6377 | 6377 |
| 1473 | 1505 | 7507 | JMP ,+2 |
| 1474 | 1506 | 7511 | JMP EQ4 |
| 1475 | 1507 | 1330 | LDH I 10 |
| 1476 | 1510 | 0000 | BACK, 0 |
| 1477 | 1511 | 0070 | EQ4, SET I 10 |
| 1500 | 1512 | 7777 | 7777 |
| 1501 | 1513 | 1000 | LDA |
| 1502 | 1514 | 1526 | NBNIN |
| 1503 | 1515 | 1120 | ADA I |
| 1504 | 1516 | 0001 | 1 |
| 1505 | 1517 | 1040 | STA |
| 1506 | 1520 | 1526 | NBNIN |
| 1507 | 1521 | 1120 | ADA I |
| 1510 | 1522 | 1001 | 1001 |
| 1511 | 1523 | 1040 | STA |
| 1512 | 1524 | 1530 | NBNIN1 |
| 1513 | 1525 | 0710 | RDC U |
| 1514 | 1526 | 0000 | NBNIN, 0 |
| 1515 | 1527 | 0710 | RDC U |
| 1516 | 1530 | 0000 | NBNIN1, 0 |
| 1517 | 1531 | 7507 | JMP BACK-1 |
| 1520 | | | /SPACE CREATES A SPACE |
| 1521 | 1532 | 0011 | SPACE, CLR |
| 1522 | 1533 | 2000 | ADD 0 |
| 1523 | 1534 | 5540 | STC BACK1 |
| 1524 | 1535 | 1020 | LDA I |
| 1525 | 1536 | 0014 | 14 |
| 1526 | 1537 | 7570 | JMP LINCD |
| 1527 | 1540 | 0000 | BACK1, 0 |
| 1530 | | | /COMMA OUTPUTS A COMMA |
| 1531 | 1541 | 0011 | COMMA, CLR |
| 1532 | 1542 | 2000 | ADD 0 |
| 1533 | 1543 | 5547 | STC BACK2 |
| 1534 | 1544 | 1020 | LDA I |
| 1535 | 1545 | 0063 | 63 |

/MNEMONIC

| | | | |
|------|------|------|----------------------------|
| 1537 | 1547 | 0000 | JMP LINC0 BACK2, 0 |
| 1540 | | | /SWAP INTERCHANGES NUMBER |
| 1541 | | | /AND LETTER COMBINATIONS |
| 1542 | | | /THEN OUTPUTS BOTH |
| 1543 | 1550 | 0011 | SWAP, CLR |
| 1544 | 1551 | 2000 | ADD 0 |
| 1545 | 1552 | 5567 | STC BACK3 |
| 1546 | 1553 | 1310 | LDH 10 |
| 1547 | 1554 | 1040 | STA |
| 1550 | 1555 | 1565 | SWAP1 |
| 1551 | 1556 | 7476 | JMP HWD |
| 1552 | 1557 | 1040 | STA |
| 1553 | 1560 | 1562 | SWAP2 |
| 1554 | 1561 | 1020 | LDA I |
| 1555 | 1562 | 0000 | SWAP2, 0 |
| 1556 | 1563 | 7570 | JMP LINC0 |
| 1557 | 1564 | 1020 | LDA I |
| 1560 | 1565 | 0000 | SWAP1, 0 |
| 1561 | 1566 | 7570 | JMP LINC0 |
| 1562 | 1567 | 0000 | BACK3, 0 |
| 1563 | | | /LINC SETS UP O/P |
| 1564 | | | /BUFFER IN Q6 |
| 1565 | 1570 | 5617 | LINC0, STC OPWD |
| 1566 | 1571 | 2000 | ADD 0 |
| 1567 | 1572 | 5626 | STC BACK4 |
| 1570 | 1573 | 1000 | LDA |
| 1571 | 1574 | 0011 | 11 |
| 1572 | 1575 | 1460 | SAE I |
| 1573 | 1576 | 7377 | 7377 |
| 1574 | 1577 | 7616 | JMP OUTPUT |
| 1575 | 1600 | 0704 | WRC /YES, END OF OP BUFFER |
| 1576 | 1601 | 0000 | TPOUT, 0 |
| 1577 | 1602 | 1000 | LDA |
| 1600 | 1603 | 1601 | TPOUT |
| 1601 | 1604 | 1120 | ADA I |
| 1602 | 1605 | 0001 | 1 |
| 1603 | 1606 | 1460 | SAE I |
| 1604 | 1607 | 6467 | 6467 |
| 1605 | 1610 | 7612 | JMP ,+2 |
| 1606 | 1611 | 7637 | JMP TPQ+3 |
| 1607 | 1612 | 1040 | STA |
| 1610 | 1613 | 1601 | TPOUT |
| 1611 | 1614 | 0071 | SET I 11 |
| 1612 | 1615 | 6777 | 6777 |
| 1613 | 1616 | 1020 | OUTPUT, LDA I |
| 1614 | 1617 | 0000 | OPWD, 0 |
| 1615 | 1620 | 1120 | ADA I |
| 1616 | 1621 | 0757 | CONV |
| 1617 | 1622 | 5624 | STC PICKUP |
| 1620 | 1623 | 1000 | LDA |
| 1621 | 1624 | 0000 | PICKUP, 0 |
| 1622 | 1625 | 1371 | STH I 11 |
| 1623 | 1626 | 0000 | BACK4, 0 |
| 1624 | 1627 | 1000 | QUIT, LDA |
| 1625 | 1630 | 1601 | TPOUT |
| 1626 | 1631 | 1040 | STA |
| 1627 | 1632 | 1634 | TPQ |
| 1630 | 1633 | 0704 | WRC |
| 1631 | 1634 | 0000 | TPQ, 0 |
| 1632 | 1635 | 0416 | 0416 |
| 1633 | 1636 | 7635 | JMP , -1 |
| 1634 | 1637 | 0717 | CHK U |

| | | | |
|------|------|--------------------------|-------------|
| 1635 | 1640 | 0000 | 0000 |
| 1636 | 1641 | 0416 | 0416 |
| 1637 | 1642 | 7641 | JMP , -1 |
| 1640 | 1643 | 0075 | SET I 15 |
| 1641 | 1644 | 0701 | RCG |
| 1642 | 1645 | 0076 | SET I 16 |
| 1643 | 1646 | 7302 | 7300 |
| 1644 | 1647 | 0074 | SET I 14 |
| 1645 | 1650 | 7720 | -57 |
| 1646 | 1651 | 0073 | SET I 13 |
| 1647 | 1652 | 1663 | TEXTZ-1 |
| 1650 | 1653 | 1033 | LDA I 13 |
| 1651 | 1654 | 0500 | IOB |
| 1652 | 1655 | 6041 | 6041 /TSF |
| 1653 | 1656 | 7654 | JMP , -2 |
| 1654 | 1657 | 0500 | IOB |
| 1655 | 1660 | 6046 | 6046 /TLS |
| 1656 | 1661 | 0234 | XSK I 14 |
| 1657 | 1662 | 7653 | JMP , -7 |
| 1660 | 1663 | 6015 | JMP 15 |
| 1661 | 1664 | 0215 | TEXTZ, 0215 |
| 1662 | 1665 | 0212 | 0212 |
| 1663 | 1666 | 0322 | 322 |
| 1664 | 1667 | 0305 | 305 |
| 1665 | 1670 | 0315 | 315 |
| 1666 | 1671 | 0317 | 317 |
| 1667 | 1672 | 0326 | 326 |
| 1670 | 1673 | 0305 | 305 |
| 1671 | 1674 | 0240 | 240 |
| 1672 | 1675 | 0324 | 324 |
| 1673 | 1676 | 0301 | 301 |
| 1674 | 1677 | 0320 | 320 |
| 1675 | 1700 | 0305 | 305 |
| 1676 | 1701 | 0240 | 240 |
| 1677 | 1702 | 0306 | 306 |
| 1700 | 1703 | 0322 | 322 |
| 1701 | 1704 | 0317 | 317 |
| 1702 | 1705 | 0315 | 315 |
| 1703 | 1706 | 0240 | 240 |
| 1704 | 1707 | 0325 | 325 |
| 1705 | 1710 | 0316 | 316 |
| 1706 | 1711 | 0311 | 311 |
| 1707 | 1712 | 0324 | 324 |
| 1710 | 1713 | 0240 | 240 |
| 1711 | 1714 | 0261 | 261 |
| 1712 | | /REMOVE TAPE FROM UNIT 1 | |
| 1713 | 1715 | 0215 | 0215 |
| 1714 | 1716 | 0212 | 0212 |
| 1715 | 1717 | 0324 | 324 |
| 1716 | 1720 | 0331 | 331 |
| 1717 | 1721 | 0320 | 320 |
| 1720 | 1722 | 0305 | 305 |
| 1721 | 1723 | 0240 | 240 |
| 1722 | 1724 | 0314 | 314 |
| 1723 | 1725 | 0306 | 306 |
| 1724 | 1726 | 0240 | 240 |
| 1725 | 1727 | 0301 | 301 |
| 1726 | 1730 | 0320 | 320 |
| 1727 | 1731 | 0240 | 240 |
| 1730 | 1732 | 0263 | 263 |
| 1731 | 1733 | 0267 | 267 |
| 1732 | 1734 | 0260 | 260 |
| 1733 | 1735 | 0254 | 254 |

| | | | |
|------|------|------|-----|
| 1734 | 1736 | 0260 | 260 |
| 1735 | 1737 | 0240 | 240 |
| 1736 | 1740 | 0303 | 303 |
| 1737 | 1741 | 0322 | 322 |
| 1740 | 1742 | 0215 | 215 |
| 1741 | 1743 | 0212 | 212 |

/TYPE LF AP 370,0 CR
/CONVERT
/18 DEC 69



0001 ERRORS

| | |
|--------|------|
| ANS1 | 4066 |
| BACK | 5510 |
| BACK1 | 5540 |
| BACK2 | 5547 |
| BACK3 | 5567 |
| BACK4 | 5626 |
| BNIN | 5152 |
| BNIN1 | 5154 |
| CHARS | 4746 |
| CKLF | 4712 |
| CNTRL | 4675 |
| COMMA | 5541 |
| COMMT | 5263 |
| CONV | 4757 |
| CRMORE | 5467 |
| EQ4 | 5511 |
| EXIT | 4726 |
| GETKBD | 4612 |
| HWD | 5476 |
| ICK | 5342 |
| INIT | 5167 |
| LEGAL | 4666 |
| LINCD | 5570 |
| LKRB | 6036 |
| LTLS | 6046 |
| LTSF | 6041 |
| MNEM | 5420 |
| MOCT | 5306 |
| MORE | 5266 |
| MO1 | 5302 |
| NBNIN | 5526 |
| NBNIN1 | 5530 |
| OPWD | 5617 |
| OUTPUT | 5616 |
| OVRIN | 5251 |
| OVRTEX | 5151 |
| PICKUP | 5624 |
| QAB | 4075 |
| QACA | 4106 |
| QAD | 4117 |
| QAE | 4141 |
| QAF | 4607 |
| QAG | 4153 |
| QAH | 4205 |
| QAI | 4222 |
| QAINIT | 4071 |
| QAJ | 4227 |
| QAK | 4376 |
| QAL | 4266 |
| QAM | 4172 |
| QAN | 4314 |

| | |
|--------|------|
| GAO | 4322 |
| QAP | 4333 |
| QAQ | 4354 |
| QARFSH | 4144 |
| QAT | 4361 |
| QAU | 4577 |
| QAV | 4407 |
| QAW | 4603 |
| QAX | 4515 |
| QAY | 4503 |
| QAZ | 4372 |
| QUIT | 5627 |
| SETUP | 5060 |
| SETUP1 | 5077 |
| SETUP2 | 5121 |
| SETUP3 | 5145 |
| SPACE | 5532 |
| START | 5257 |
| SWAP | 5550 |
| SWAP1 | 5565 |
| SWAP2 | 5562 |
| SYMCK | 5365 |
| TAGCK | 5356 |
| TERM | 5412 |
| TEXTZ | 5664 |
| TEX1 | 4025 |
| TPE | 4735 |
| TPOUT | 5601 |
| TPQ | 5634 |
| TXAGIN | 5333 |
| TXBG | 5314 |
| TXMETA | 5311 |
| TY | 4627 |
| UCK | 5350 |

O

O

O