



pdp11

TEV11
**Field Maintenance
Print Set**

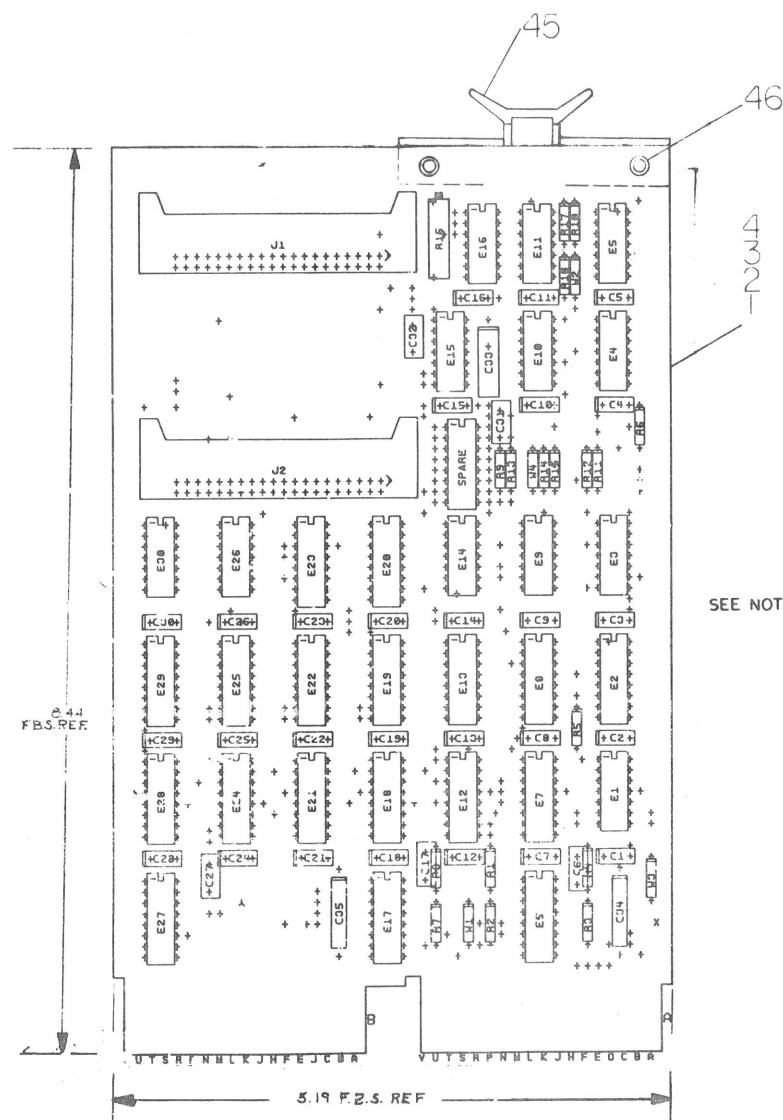
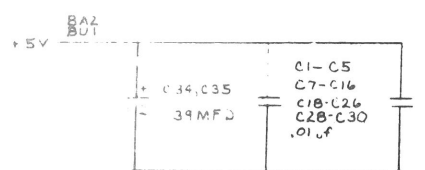
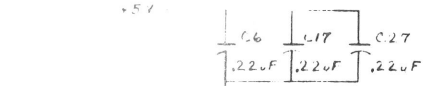
digital

THIS DRAWING AND SPECIFICATIONS, HEREIN, ARE THE PROPERTY OF DIGITAL EQUIPMENT CORPORATION AND SHALL NOT BE REPRODUCED OR COPIED OR USED IN WHOLE OR IN PART AS THE BASIS FOR THE MANUFACTURE OR SALE OF ITEMS WITHOUT WRITTEN PERMISSION.
 COPYRIGHT © 1975 DIGITAL EQUIPMENT CORPORATION

NOTES:
 1 REFERENCE DESIGNATIONS R1 & R2 ARE NOT USED
 2 IF IC DEC 8641 (19-11574) IS NOT AVAILABLE, USE IC DEC 8838 (17-11117) IN ITS PLACE.

1000 2270

REF	REF	REF	REF	REF	REF	REF	REF	REF	REF	X-Y COORDINATE HOLE LOCATION	K-CO-M9400-B-4	1
REF	REF	REF	REF	REF	REF	REF	REF	REF	REF	ASSY/DRILLING HOLE LAYOUT	D-AH-M9400-B-5	2
REF	REF	REF	REF	REF	REF	REF	REF	REF	REF	MODULE ECO HISTORY	B-MH-M9400-B-8	3
1	1	1	1	1	1	1	1	1	1	ETCHED CIRCUIT BOARD	5011903	4
27	27	27				27		27		C1 THRU C5, C7 THRU C16, C18 THRU C26, C28, C29, C30	1011610-01	5
3	3	3				3	3	3	3	C6, C17, C27	1010274	6
1	1	1				1		1		C31	1000026	7
1	1	1				1		1		C32	1005820	8
1	1	1				1		1		C33	1005784	9
2	2	2	2	2	2	2	2	2	2	C34, C35	1000076	10
2			2	2						J1, J2	1209941-02	11
4	4	4				4		4		XE19, XE22, XE25, XE29	1211813	12
1	1	1				1		1		R9	1302379	13
1	1	1				1		1		R8	1300295	14
2	2	2				2		2		R11, R13	1300295	15
1	1	1				1		1		R4	1300295	17
1	1	1				1		1		R7	1301424	17
2	2	2				2		2		R12, R14	1301424	18
1	1	1				1		1		R3	1301424	19
4	4	4				4		4		R5, R6, R10, R15	1300365	20
1	1	1				1		1		R16	1309143-13	21
1	1	1				1		1		R17	1300447	22
1	1	1				1		1		R18	1301874	23
1	1	1				1		1		E16	1909686	24
1	1	1				1		1		E9	1910155	25
4	4	4				4		4		E3, E5, E10, E26	1905547	26
1	1	1				1		1		E1	1909705	27
1	1	1				1		1		E14	1909004	28
1	1	1				1		1		E11	1910878	29
2	2	2				2		2		E4, E30	1905575	30
6	6	6				6		6		E7, E12, E18, E21, E24, E28	1911579	31
1	1	1				1		1		E15	1911038	32
2	2	2				2		2		E20, E23	1912951	33
1	1	1				1		1		E2	1912395	34
2	2	2				2		2		E8, E13	1910652	35
1	1	1				1		1		E19	23074A9-00	36
1	1	1				1		1		E22	23075A9-00	37
1	1	1				1		1		E25	23076A9-00	38
1	1	1				1		1		E29	23077A9-00	39
						3		3		E6, E17, E27	1311003-01	40
3						3		3		E6, E17, E27	1311003-02	41
						1		1		W1	9009185	42
2	2	2				2		2		W2, W4	9009185	43
1	1	1				1		1		W3	9009185	44
1	2	2	1	1	2	2	2	2		HANDLE, FLIP CHIP MAGENTA	9008337-06	45
2	4	4	2	2	4	4	4	4		EYELET	9006732	46
1	1	1				1		1		SPLIT LUG	9006735	47



IC TYPE	GND	+5V
IC 5644	8	16
IC 8136	8	14
IC 74174	8	16
IC 8556	8	16
IC 864	8	16

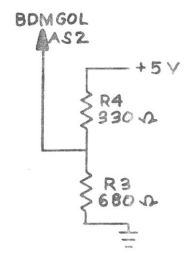
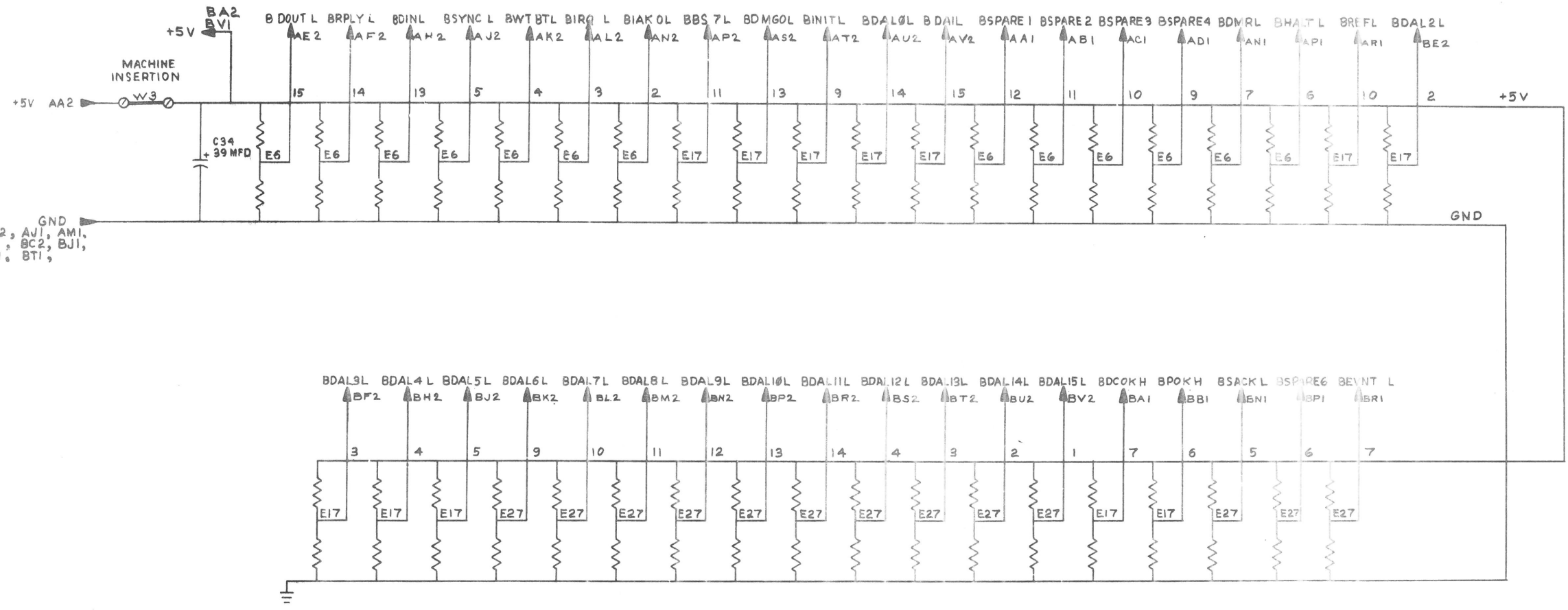
GND AND 5V ARE USUALLY PIN 7 AND 14 RESPECTIVELY EXCEPTIONS ARE STATED ABOVE

IC PIN LOCATIONS

QTY	REF. DESIGNATION	DESCRIPTION	PART NO.	ITEM NO.																
FIRST USED ON OPTION MODEL																				
ETCH BOARD REV. B																				
PARTS LIST																				
<table border="1"> <tr> <td>DRG. DATE</td> <td>DATE</td> <td rowspan="5"> </td> </tr> <tr> <td>CHK'D. DATE</td> <td>DATE</td> </tr> <tr> <td>ENGR. DATE</td> <td>DATE</td> </tr> <tr> <td>PROJ. ENG. DATE</td> <td>DATE</td> </tr> <tr> <td>PROD. DATE</td> <td>DATE</td> </tr> </table>					DRG. DATE	DATE		CHK'D. DATE	DATE	ENGR. DATE	DATE	PROJ. ENG. DATE	DATE	PROD. DATE	DATE					
DRG. DATE	DATE																			
CHK'D. DATE	DATE																			
ENGR. DATE	DATE																			
PROJ. ENG. DATE	DATE																			
PROD. DATE	DATE																			
TITLE LSI REF. BOOT CABLE CONN.																				
NEXT HIGHER ASSY																				
<table border="1"> <tr> <td>DEC NO.</td> <td>EIA NO.</td> <td>DEC NO.</td> <td>EIA NO.</td> <td>SCALE</td> <td>SHEET</td> <td>OF</td> <td>DIST.</td> </tr> <tr> <td></td> <td></td> <td></td> <td></td> <td>1:1</td> <td>1</td> <td>5</td> <td></td> </tr> </table>					DEC NO.	EIA NO.	DEC NO.	EIA NO.	SCALE	SHEET	OF	DIST.					1:1	1	5	
DEC NO.	EIA NO.	DEC NO.	EIA NO.	SCALE	SHEET	OF	DIST.													
				1:1	1	5														

"THIS DRAWING AND SPECIFICATIONS HEREIN ARE THE PROPERTY OF DIGITAL EQUIPMENT CORPORATION AND SHALL NOT BE REPRODUCED OR COPIED OR USED IN WHOLE OR IN PART AS THE BASIS FOR THE MANUFACTURE OR SALE OF ITEMS WITHOUT WRITTEN PERMISSION. SEE COPYRIGHT © 1975 DIGITAL EQUIPMENT CORPORATION"

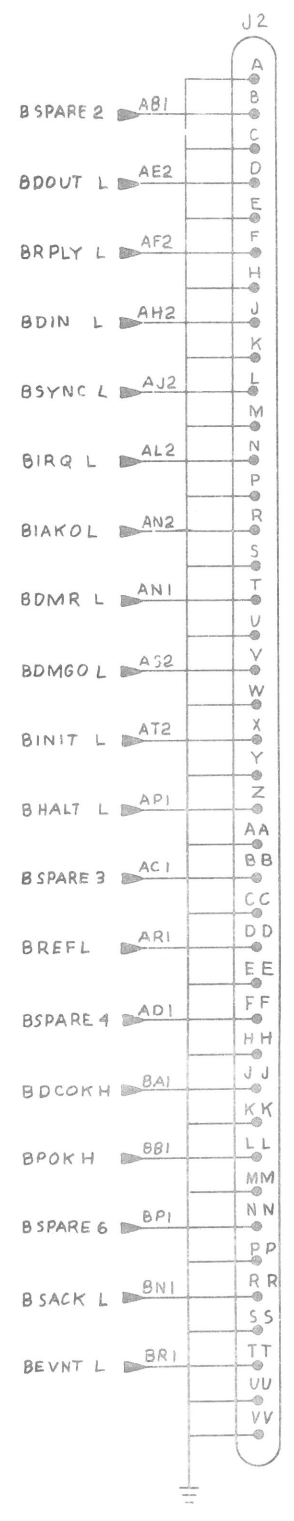
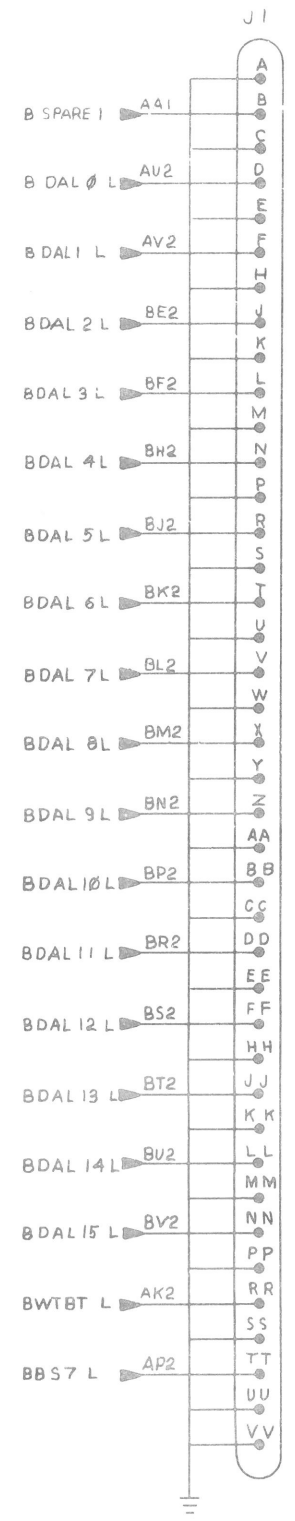
DCS M9400-0-1



REVISIONS		
CHK	CHANGE NO.	REV.

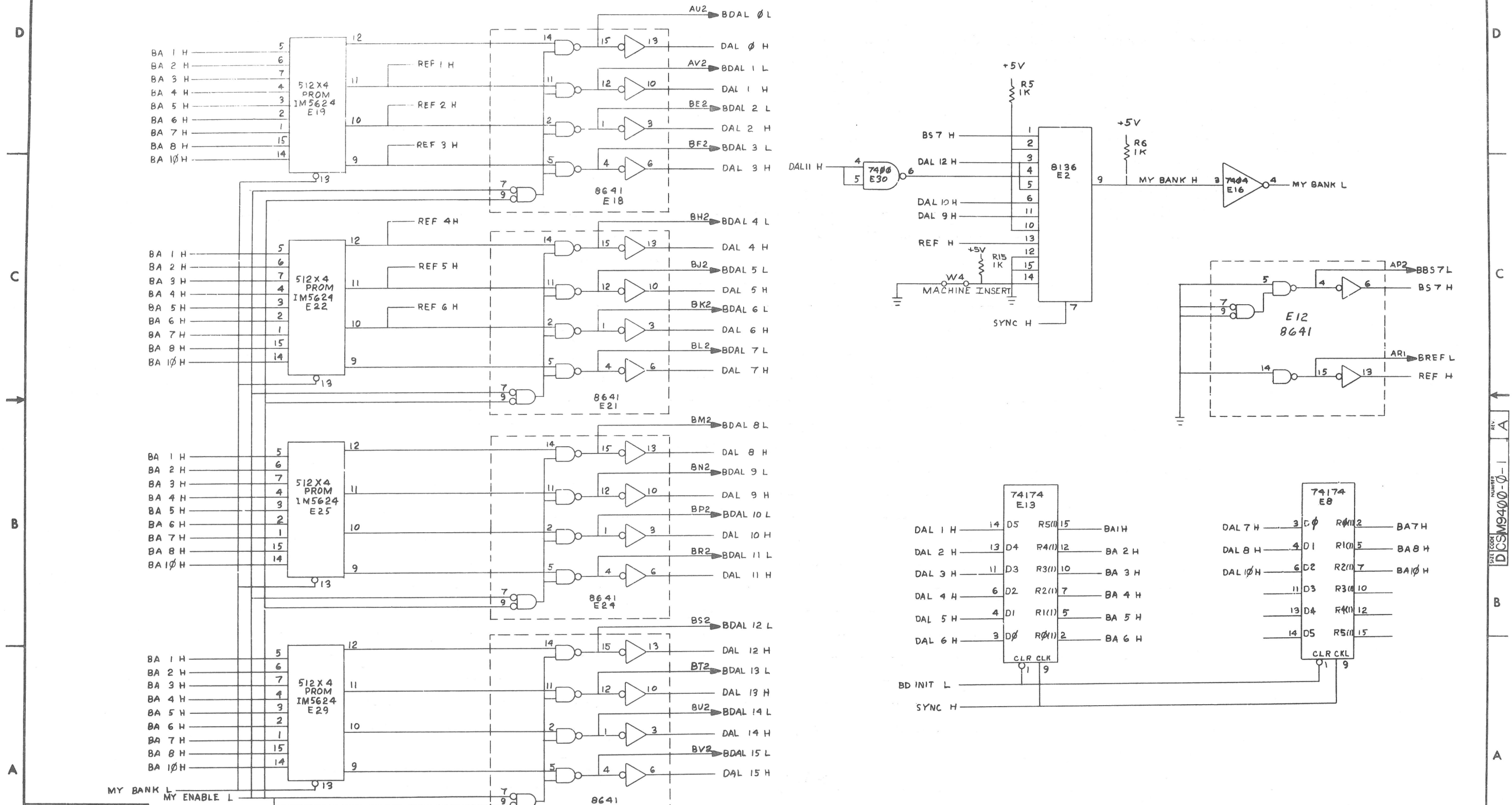
TITLE	SIZE CODE	NUMBER	REV.
LSI REF BOOT CABLE CONN	DCS	M9400-0-1	A
SCALE	SHEET	OF	DIST.
	2	5	

"THIS DRAWING AND SPECIFICATIONS, HEREIN, ARE THE PROPERTY OF DIGITAL EQUIPMENT CORPORATION AND SHALL NOT BE REPRODUCED OR COPIED OR USED IN WHOLE OR IN PART AS THE BASIS FOR THE MANUFACTURE OR SALE OF ITEMS WITHOUT WRITTEN PERMISSION. COPYRIGHT © 1975 DIGITAL EQUIPMENT CORPORATION"



REVISIONS		
CHK	CHANGE NO.	REV.

"THIS DRAWING AND SPECIFICATIONS HEREIN ARE THE PROPERTY OF DIGITAL EQUIPMENT CORPORATION AND SHALL NOT BE REPRODUCED OR COPIED OR USED IN WHOLE OR IN PART AS THE BASIS FOR THE MANUFACTURE OR SALE OF ITEMS WITHOUT WRITTEN PERMISSION. COPYRIGHT © 1975 DIGITAL EQUIPMENT CORPORATION"



REVISIONS		
CHK	CHANGE NO.	REV.

TITLE	SIZE CODE	NUMBER	REV.
LSI REF BOOT CABLE CONN	D	DCSM9400-0-1	A
SCALE	SHEET	DIST.	
	5 OF 5		

digital

**DIGITAL EQUIPMENT CORPORATION
MAYNARD, MASSACHUSETTS 01754**