

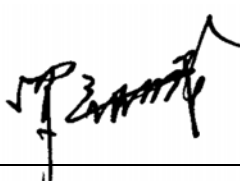


PRODUCT SPECIFICATION

16×2 CHARACTERS LCD MODULE MODEL: C1602A4TVW6B-T0 Ver:1.1

- < ◆ > Preliminary Specification
 < ◇ > Final Specification

CUSTOMER'S APPROVAL	
CUSTOMER :	
SIGNATURE:	DATE:

APPROVED BY	EE REVIEWED	ME REVIEWED	PREPARED BY
侯芝云 2020.05.08	侯芝云 2020.05.08		徐浩

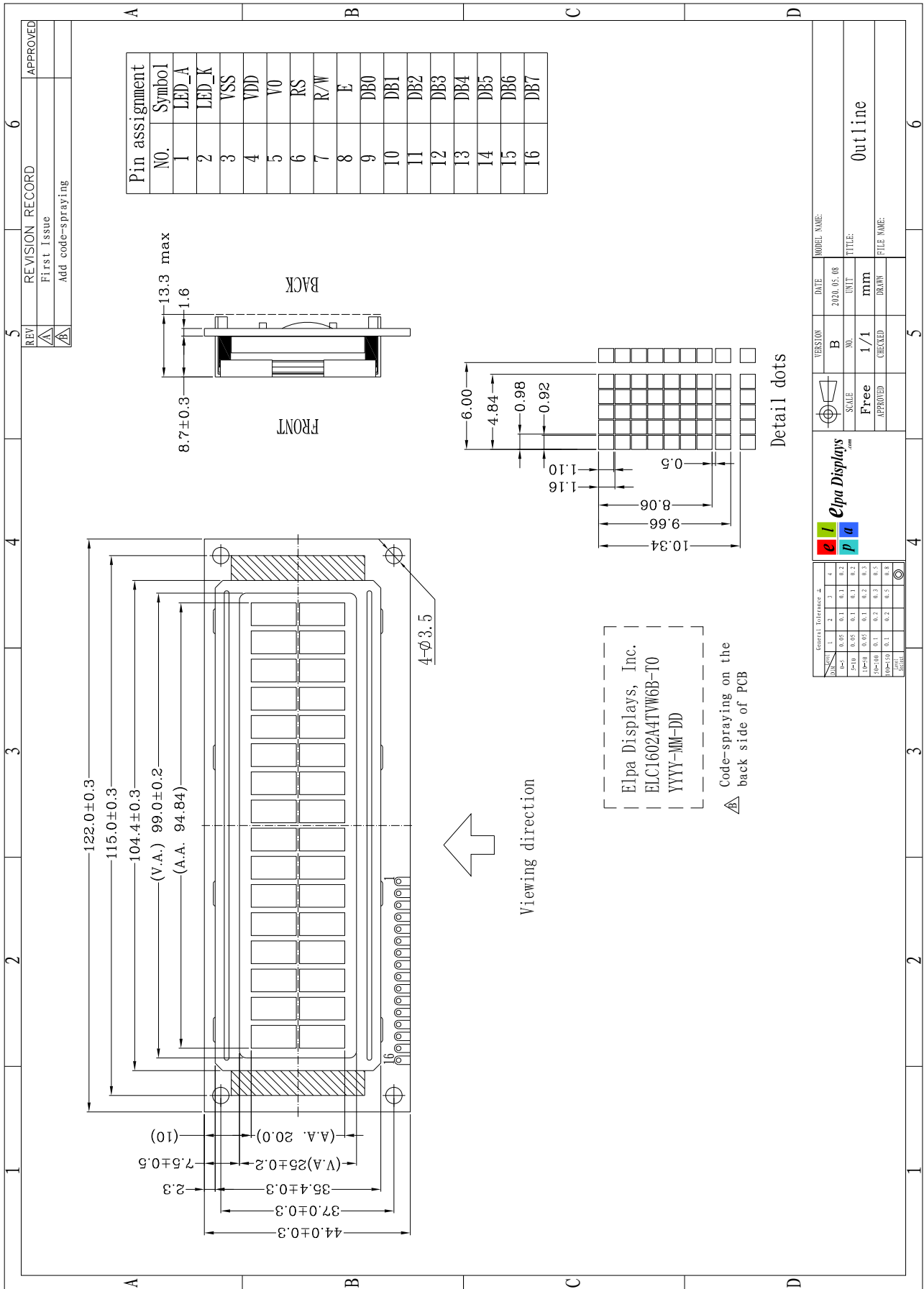
Revision Status

Version	Revise Date	Page	Content	Modified By
Ver. 1.0	2020.05.04		First Issued	
Ver. 1.1	2020.05.08		Add code-spraying	

1. General Specification

No.	Item	Specification	Unit
1	Outline Dimension	122(W) x 44(H) x 13.3 (D) Max	mm
2	Viewing Area	99(H) x 25(V)	mm
3	Active Area	94.84(H) x 20(V)	mm
4	Character Size	4.84(H) x 9.66(V)	mm
5	Character Pitch	6(H) x 10.34(V)	mm
6	Number of Characters	16(H) x2(V)	Character
7	Display Type	VA	-
8	Viewing Direction	6 O'Clock	-
9	Polarizer Mode	Transmissive/Negative	-
10	LCD Drive method	1/16 duty, 1/4 bias	-
11	LCD Drive Voltage	6.0(With DC-DC circuit)	V
12	Operation Temperature	From -20 To +70	°C
13	Storage Temperature	From -30 To +80	°C
14	Controller IC	ST7066U-5H-V1	-
15	Logic Power Supply Voltage	3.3	V
16	Backlight Unit	2*2=4 LED/Side White Vf=3.3V If=2*60mA(typ)	-
17	Special Requirements	The dimension with"()" is reference	-

2. Outline Dimensions



REV	REVISION RECORD	APPROVED
5	First Issue	
4	Add code-spraying	

VERSION	DATE	MODEL NAME
B	2020.05.08	

SCALE	UNIT	TITLE
Free	mm	Outline

APPROVED	CHECKED	DRAWN	FILE NAME

General Tolerance	1	2	3	4
0~5	0.05	0.1	0.1	0.2
5~10	0.05	0.1	0.1	0.2
10~30	0.05	0.1	0.2	0.3
30~100	0.1	0.2	0.3	0.5
100~300	0.1	0.2	0.5	0.8